

For Research Use Only

SOD2 Recombinant antibody

Catalog Number: 83519-4-RR



Basic Information

Catalog Number: 83519-4-RR	GenBank Accession Number: BC016934	Purification Method: Protein A purification
Concentration: 800 ug/ml	GeneID (NCBI): 6648	CloneNo.: 240462H8
Source: Rabbit	UNIPROT ID: P04179	Recommended Dilutions: WB 1:5000-1:50000 IHC 1:1500-1:6000 IF/ICC 1:400-1:1600
Isotype: IgG	Full Name: superoxide dismutase 2, mitochondrial	
Immunogen Catalog Number: AG21388	Calculated MW: 25 kDa	
	Observed MW: 25 kDa	

Applications

Tested Applications: WB, IHC, IF/ICC, FC (Intra), ELISA	Positive Controls:
Species Specificity: human, mouse, rat	WB : HepG2 cells, HeLa cells, HEK-293 cells, SH-SY5Y cells, NIH/3T3 cells, mouse brain tissue, rat brain tissue
Note-IHC: suggested antigen retrieval with TE buffer pH 9.0; (*) Alternatively, antigen retrieval may be performed with citrate buffer pH 6.0	IHC : human ovary cancer tissue,
	IF/ICC : HUVEC cells,

Background Information

SOD2(superoxide dismutase 2, mitochondrial) is also named as IPOB, MNSOD, SODM, Mn-SOD and belongs to the iron/manganese superoxide dismutase family. It is a marker of mitochondria, which is restricted to the perinuclear area in a cell with aggregate formation of mutant SOD1(PMID:12659845). It functions as the first line of antioxidant defense against highly reactive superoxide radicals and it appears to be early predictors for survival in septic patients with with MIF(PMID:20863520). It has 2 isoforms with the molecular weight of 25 kDa and 21 kDa.

Storage

Storage:
Store at -20°C. Stable for one year after shipment.
Storage Buffer:
PBS with 0.02% sodium azide and 50% glycerol pH 7.3.
Aliquoting is unnecessary for -20°C storage

For technical support and original validation data for this product please contact:

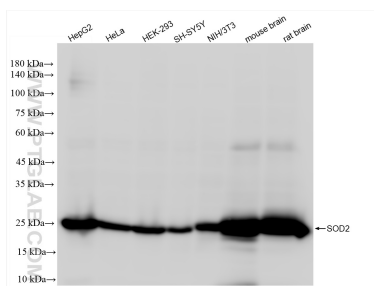
T: 4006900926

E: Proteintech-CN@ptglab.com

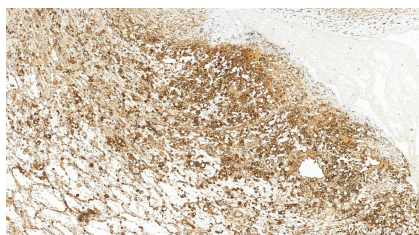
W: ptgcn.com

This product is exclusively available under Proteintech Group brand and is not available to purchase from any other manufacturer.

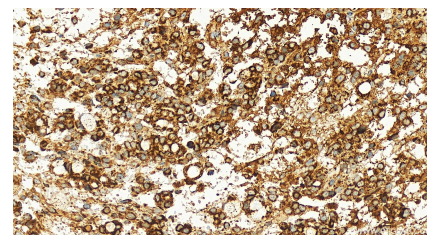
Selected Validation Data



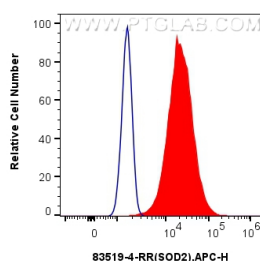
Various lysates were subjected to SDS PAGE followed by western blot with 83519-4-RR (SOD2 antibody) at dilution of 1:20000 incubated at room temperature for 1.5 hours.



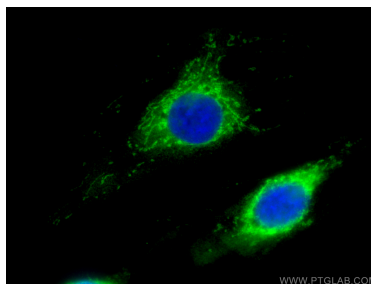
Immunohistochemical analysis of paraffin-embedded human ovary cancer tissue slide using 83519-4-RR (SOD2 antibody) at dilution of 1:3000 (under 20x lens). Heat mediated antigen retrieval with Tris-EDTA buffer (pH 9.0).



Immunohistochemical analysis of paraffin-embedded human ovary cancer tissue slide using 83519-4-RR (SOD2 antibody) at dilution of 1:3000 (under 20x lens). Heat mediated antigen retrieval with Tris-EDTA buffer (pH 9.0).



1x10⁶ A549 cells were intracellularly stained with 0.25 ug Sod2 Recombinant Antibody (83519-4-RR, Clone:240462H8) and APC-Conjugated AffiniPure Goat Anti-Rabbit IgG(H+L)(red), or 0.25 ug Isotype Control (blue). Cells were fixed with 4% PFA and permeabilized with Flow Cytometry Perm Buffer (PF00011-C).



Immunofluorescent analysis of (-20°C Methanol) fixed HUVEC cells using SOD2 antibody (83519-4-RR, Clone: 240462H8) at dilution of 1:800 and Multi-rAb CoraLite ® Plus 488-Goat Anti-Rabbit Recombinant Secondary Antibody (H+L) (RGAR002).