

For Research Use Only

SOD2 Recombinant antibody

Catalog Number: 83519-3-RR



Basic Information

| | | |
|---|---|---|
| Catalog Number: 83519-3-RR | GenBank Accession Number: BC016934 | Purification Method: Protein A purification |
| Size: 1000 ug/ml | GeneID (NCBI): 6648 | CloneNo.: 240462D8 |
| Source: Rabbit | UNIPROT ID: P04179 | Recommended Dilutions: WB 1:5000-1:50000 IHC 1:500-1:2000 IF/ICC 1:500-1:2000 |
| Isotype: IgG | Full Name: superoxide dismutase 2, mitochondrial | |
| Immunogen Catalog Number: AG21388 | Calculated MW: 25 kDa | |
| | Observed MW: 25 kDa | |

Applications

| | |
|---|--|
| Tested Applications: WB, IHC, IF/ICC, ELISA | Positive Controls: |
| Species Specificity: human, mouse, rat | WB : HepG2 cells, HeLa cells, SH-SY5Y cells, MCF-7 cells, NIH/3T3 cells, mouse brain tissue, rat brain tissue |
| Note-IHC: suggested antigen retrieval with TE buffer pH 9.0; (*) Alternatively, antigen retrieval may be performed with citrate buffer pH 6.0 | IHC : human ovary cancer tissue, |
| | IF/ICC : HUVEC cells, |

Background Information

SOD2(superoxide dismutase 2, mitochondrial) is also named as IPOB, MNSOD, SODM, Mn-SOD and belongs to the iron/manganese superoxide dismutase family. It is a marker of mitochondria, which is restricted to the perinuclear area in a cell with aggregate formation of mutant SOD1(PMID:12659845). It functions as the first line of antioxidant defense against highly reactive superoxide radicals and it appears to be early predictors for survival in septic patients with with MIF(PMID:20863520). It has 2 isoforms with the molecular weight of 25 kDa and 21 kDa.

Storage

Storage:
Store at -20°C. Stable for one year after shipment.
Storage Buffer:
PBS with 0.02% sodium azide and 50% glycerol pH 7.3.
Aliquoting is unnecessary for -20°C storage

For technical support and original validation data for this product please contact:

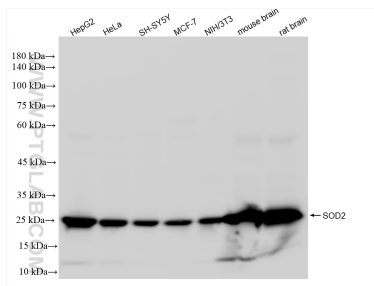
T: 4006900926

E: Proteintech-CN@ptglab.com

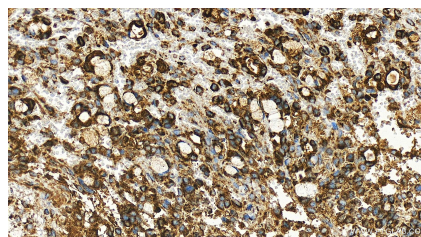
W: ptgcn.com

This product is exclusively available under Proteintech Group brand and is not available to purchase from any other manufacturer.

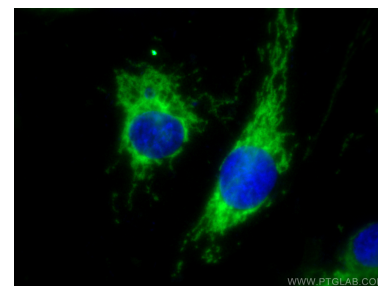
Selected Validation Data



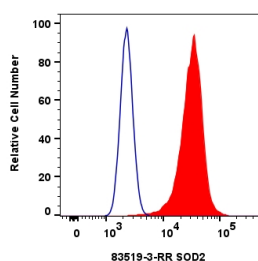
HepG2 cells were subjected to SDS PAGE followed by western blot with 83519-3-RR (SOD2 antibody) at dilution of 1:10000 incubated at room temperature for 1.5 hours.



Immunohistochemical analysis of paraffin-embedded human ovary cancer tissue slide using 83519-3-RR (SOD2 antibody) at dilution of 1:1000 (under 20x lens). Heat mediated antigen retrieval with Tris-EDTA buffer (pH 9.0).



Immunofluorescent analysis of (-20°C Methanol) fixed HUVEC cells using SOD2 antibody (83519-3-RR, Clone: 240462D8) at dilution of 1:1000 and Multi-rAb CoraLite® Plus 488-Goat Anti-Rabbit Recombinant Secondary Antibody (H+L) (RGAR002).



1x10⁶ HeLa cells were intracellularly stained with 0.25 ug SOD2 Recombinant antibody (83519-3-RR, Clone:240462D8) and CoraLite®488-Conjugated Goat Anti-Rabbit IgG(H+L) (SA00013-2)(red), or 0.25 ug Rabbit IgG Isotype Control Recombinant Antibody (98136-1-RR, Clone: 240953C9) (blue). Cells were fixed with 4% PFA and permeabilized with Flow Cytometry Perm Buffer (PF00011-C).