

For Research Use Only

RPS11 Recombinant antibody, PBS Only (Detector)

Catalog Number: 83517-4-PBS



Basic Information

Catalog Number:

83517-4-PBS

Concentration:

1 mg/ml

Source:

Rabbit

Isotype:

IgG

Immunogen Catalog Number:

AG34848

GenBank Accession Number:

BC007945

GeneID (NCBI):

6205

UNIPROT ID:

P62280

Full Name:

ribosomal protein S11

Calculated MW:

158 aa, 18 kDa

Purification Method:

Protein A purification

CloneNo.:

240327G11

Applications

Tested Applications:

Sandwich ELISA, Indirect ELISA, Sample test

Species Specificity:

human

Background Information

Storage

Storage:

Store at -80°C.

The product is shipped with ice packs. Upon receipt, store it immediately at -80°C

Storage Buffer:

PBS only, pH7.3

For technical support and original validation data for this product please contact:

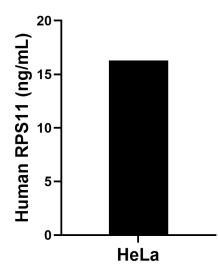
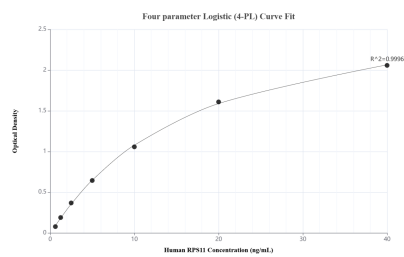
T: 4006900926

E: Proteintech-CN@ptglab.com

W: ptgcn.com

This product is exclusively available under Proteintech Group brand and is not available to purchase from any other manufacturer.

Selected Validation Data



Sandwich ELISA standard curve of MP00515-2, Human RPS11 Recombinant Matched Antibody Pair - PBS only. 83517-2-PBS was coated to a plate as the capture antibody and incubated with serial dilutions of standard Ag34848. 83517-4-PBS was HRP conjugated as the detection antibody. Range: 0.625-40 ng/mL

The mean RPS11 concentration was determined to be 16.30 ng/mL in HeLa cell extract based on a 2.90 mg/mL extract load.