

For Research Use Only

RPS11 Recombinant antibody, PBS Only

Catalog Number: 83517-3-PBS



Basic Information

Catalog Number:

83517-3-PBS

Size:

1 mg/ml

Source:

Rabbit

Isotype:

IgG

Immunogen Catalog Number:

AG34848

GenBank Accession Number:

BC007945

GeneID (NCBI):

6205

UNIPROT ID:

P62280

Full Name:

ribosomal protein S11

Calculated MW:

158 aa, 18 kDa

Observed MW:

18 kDa

Purification Method:

Protein A purification

CloneNo.:

240327D11

Applications

Tested Applications:

WB, IHC, IF/ICC, FC (Intra), ELISA

Species Specificity:

human, mouse, rat

Background Information

RPS11 is a ribosomal protein involved in ribosome biogenesis. It is a component of the small ribosomal subunit. The ribosome is a large ribonucleoprotein complex responsible for the synthesis of proteins in the cell.

Storage

Storage:

Store at -80°C.

The product is shipped with ice packs. Upon receipt, store it immediately at -80°C

Storage Buffer:

PBS Only

For technical support and original validation data for this product please contact:

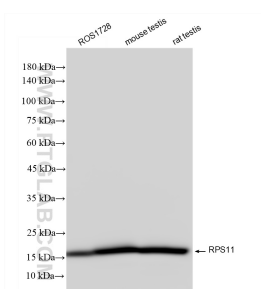
T: 4006900926

E: Proteintech-CN@ptglab.com

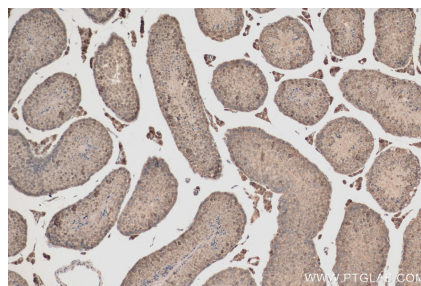
W: ptgcn.com

This product is exclusively available under Proteintech Group brand and is not available to purchase from any other manufacturer.

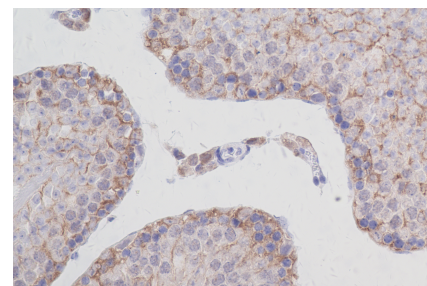
Selected Validation Data



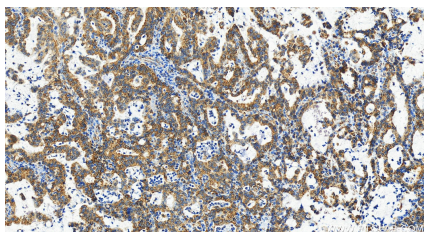
Various lysates were subjected to SDS PAGE followed by western blot with 83517-3-RR (RPS11 antibody) at dilution of 1:20000 incubated at room temperature for 1.5 hours. This data was developed using the same antibody clone with 83517-3-PBS in a different storage buffer formulation.



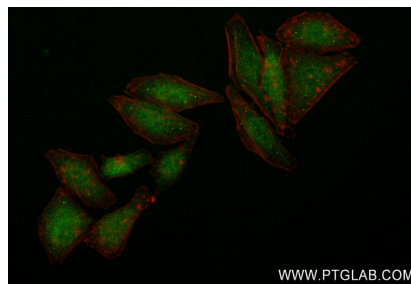
Immunohistochemical analysis of paraffin-embedded mouse testis tissue slide using 83517-3-RR (RPS11 antibody) at dilution of 1:400 (under 10x lens). Heat mediated antigen retrieval with Tris-EDTA buffer (pH 9.0). This data was developed using the same antibody clone with 83517-3-PBS in a different storage buffer formulation.



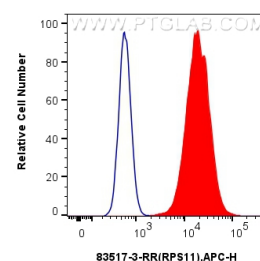
Immunohistochemical analysis of paraffin-embedded mouse testis tissue slide using 83517-3-RR (RPS11 antibody) at dilution of 1:400 (under 40x lens). Heat mediated antigen retrieval with Tris-EDTA buffer (pH 9.0). This data was developed using the same antibody clone with 83517-3-PBS in a different storage buffer formulation.



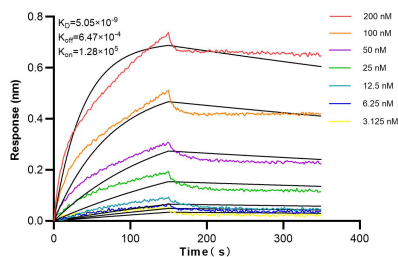
Immunohistochemical analysis of paraffin-embedded human stomach cancer tissue slide using 83517-3-RR (RPS11 antibody) at dilution of 1:4000 (under 20x lens). Heat mediated antigen retrieval with Tris-EDTA buffer (pH 9). This data was developed using the same antibody clone with 83517-3-PBS in a different storage buffer formulation.



Immunofluorescent analysis of (4% PFA) fixed HepG2 cells using RPS11 antibody (83517-3-RR, Clone: 240327D11) at dilution of 1:250 and Multi-rAb Coralite® Plus 488-Goat Anti-Rabbit Recombinant Secondary Antibody (H+L) (RGAR002), CL594-Phalloidin (red). This data was developed using the same antibody clone with 83517-3-PBS in a different storage buffer formulation.



1×10^6 MCF-7 cells were intracellularly stained with 0.25 μ g RPS11 Recombinant antibody (83517-3-RR, Clone: 240327D11) and APC-Conjugated AffiniPure Goat Anti-Rabbit IgG(H+L)(red), or 0.25 μ g Isotype Control (blue). Cells were fixed with 4% PFA and permeabilized with Flow Cytometry Perm Buffer (PF00011-C). This data was developed using the same antibody clone with 83517-3-PBS in a different storage buffer formulation.



Biolayer interferometry (BLI) kinetic assays of 83517-3-RR against Human RPS11 were performed. The affinity constant is 5.05 nM.