

For Research Use Only

Mouse PD-1/CD279 Recombinant antibody, PBS Only (Detector)

Catalog Number: 83516-9-PBS



Basic Information

Catalog Number:

83516-9-PBS

Size:

1 mg/ml

Source:

Rabbit

Isotype:

IgG

GenBank Accession Number:

NM_008798.2

GeneID (NCBI):

18566

UNIPROT ID:

Q02242

Full Name:

programmed cell death 1

Calculated MW:

32 kDa

Purification Method:

Protein A purification

CloneNo.:

240389D12

Applications

Tested Applications:

Sandwich ELISA, Indirect ELISA, Sample test

Species Specificity:

mouse

Background Information

Storage

Storage:

Store at -80°C.

The product is shipped with ice packs. Upon receipt, store it immediately at -80°C

Storage Buffer:

PBS Only

For technical support and original validation data for this product please contact:

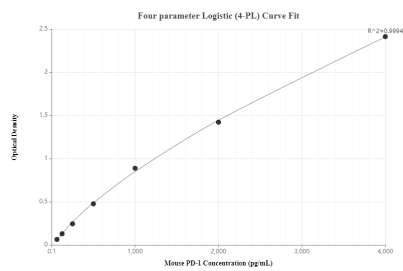
T: 4006900926

E: Proteintech-CN@ptglab.com

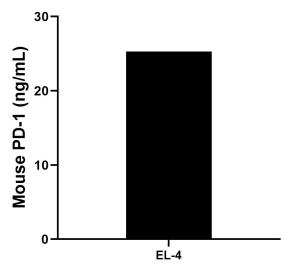
W: ptgcn.com

This product is exclusively available under Proteintech Group brand and is not available to purchase from any other manufacturer.

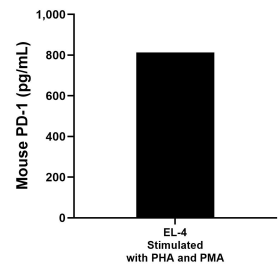
Selected Validation Data



Sandwich ELISA standard curve of MP00496-4, Mouse PD-1/CD279 Monoclonal Matched Antibody Pair - PBS only. 83516-4-PBS was coated to a plate as the capture antibody and incubated with serial dilutions of standard Eg0918. 83516-9-PBS was HRP conjugated as the detection antibody. Range: 62.5-4000 pg/mL



The mean mouse PD-1/CD279 concentration was determined to be 14.08 ng/mL in EL-4 cell extract based on a 3.0 mg/mL extract load.



EL-4 was cultured in RPMI 1640 supplemented with 10% fetal bovine serum, 50 μ M β -mercaptoethanol, 2 mM L-glutamine, and 100 μ g/mL of streptomycin sulfate. The cells were stimulated with 10 μ g/mL of PHA and 10 ng/mL of PMA. An aliquot of the cell culture supernatant was removed, assayed for mouse PD-1/CD279 and measured 812.8 pg/mL