

Integrin beta-5 Recombinant antibody

Catalog Number: 83514-3-RR

Basic Information

Catalog Number:	83514-3-RR	GenBank Accession Number:	BC006541	Purification Method:	Protein A purification
Size:	1000 ug/ml	GeneID (NCBI):	3693	CloneNo.:	240401G11
Source:	Rabbit	UNIPROT ID:	P18084	Recommended Dilutions:	WB 1:500-1:2000 IHC 1:50-1:500
Isotype:	IgG	Full Name:	integrin, beta 5		
Immunogen Catalog Number:	AG29783	Calculated MW:	88 kDa		
		Observed MW:	88-100 kDa		

Applications

Tested Applications:
WB, IHC, FC (Intra), ELISA

Species Specificity:
human

**Note-IHC: suggested antigen retrieval with
TE buffer pH 9.0; (*) Alternatively, antigen
retrieval may be performed with citrate
buffer pH 6.0**

Positive Controls:

WB : A549 cells, HT-29 cells, NIH-H1299 cells

IHC : human ovary cancer tissue,

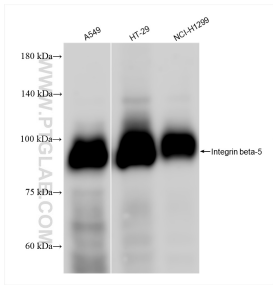
Background Information

ITGB5, also known as Integrin beta-5. It is expected to be located in the plasma membrane and mitochondria, which is ubiquitinated in placenta and gall bladder. ITGB5 is a member of integrins and was proved to be associated with pathological processes in several tumors (PMID: 34966851). It is reported that TGB5 is highly expressed in hepatocellular carcinoma (HCC), and miR-185 regulates the expression of β -catenin through the ITGB5-dependent manner and affects the proliferation and migration of HCC cells (PMID: 35223869). The molecular weight of ITGB5 is 88 kDa, and the glycosylation modification also exists.

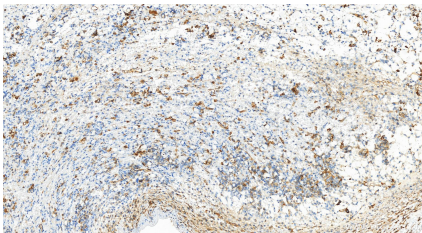
Storage

Storage:
Store at -20°C. Stable for one year after shipment.
Storage Buffer:
PBS with 0.02% sodium azide and 50% glycerol pH 7.3.
Aliquoting is unnecessary for -20°C storage

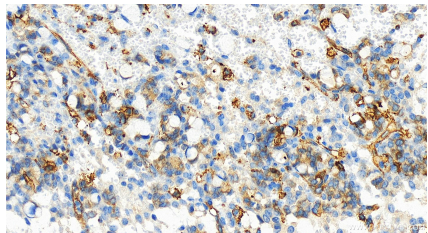
Selected Validation Data



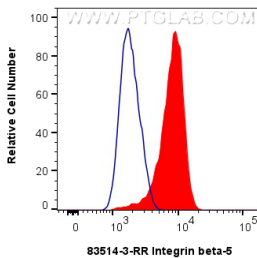
Various lysates were subjected to SDS PAGE followed by western blot with 83514-3-RR (Integrin beta-5 antibody) at dilution of 1:1000 incubated at room temperature for 1.5 hours.



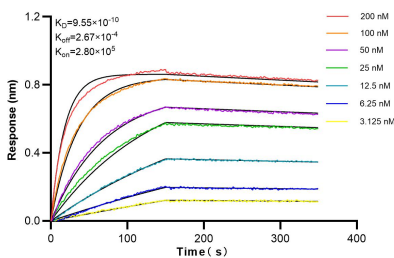
Immunohistochemical analysis of paraffin-embedded human ovary cancer tissue slide using 83514-3-RR (Integrin beta-5 antibody) at dilution of 1:200 (under 20x lens). Heat mediated antigen retrieval with Tris-EDTA buffer (pH 9.0).



Immunohistochemical analysis of paraffin-embedded human ovary cancer tissue slide using 83514-3-RR (Integrin beta-5 antibody) at dilution of 1:200 (under 20x lens). Heat mediated antigen retrieval with Tris-EDTA buffer (pH 9.0).



1x10⁶ HeLa cells were intracellularly stained with 0.25 ug Integrin beta-5 Recombinant antibody (83514-3-RR, Clone:240401G11) and CoraLite®488-Conjugated Goat Anti-Rabbit IgG(H+L) (SA00013-2) (red), or 0.25 ug Rabbit IgG control Rabbit PolyAb (30000-O-AP) (blue). Cells were fixed with 4% PFA and permeabilized with Flow Cytometry Perm Buffer (PF00011-C).



Biolayer interferometry (BLI) kinetic assays of 83514-3-RR against Human Integrin beta-5 were performed. The affinity constant is 0.955 nM.