

For Research Use Only

# Integrin beta-5 Recombinant antibody, PBS Only (Detector)

Catalog Number: 83514-1-PBS



## Basic Information

Catalog Number:

83514-1-PBS

Size:

1 mg/ml

Source:

Rabbit

Isotype:

IgG

Immunogen Catalog Number:

AG29783

GenBank Accession Number:

BC006541

GeneID (NCBI):

3693

UNIPROT ID:

P18084

Full Name:

integrin, beta 5

Calculated MW:

88 kDa

Purification Method:

Protein A purification

CloneNo.:

240401C12

## Applications

Tested Applications:

Cytometric bead array, Sandwich ELISA, Indirect ELISA,  
Sample test

Species Specificity:

human

## Background Information

### Storage

Storage:

Store at -80°C.

**The product is shipped with ice packs. Upon receipt, store it immediately at -80°C**

Storage Buffer:

PBS Only

For technical support and original validation data for this product please contact:

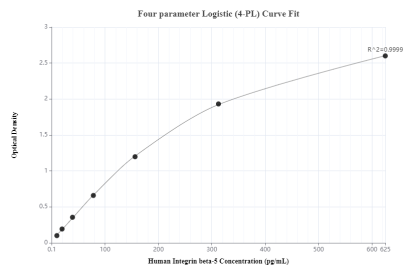
T: 4006900926

E: [Proteintech-CN@ptglab.com](mailto:Proteintech-CN@ptglab.com)

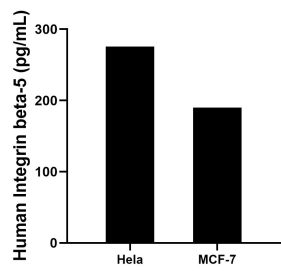
W: [ptgcn.com](http://ptgcn.com)

**This product is exclusively available under Proteintech Group brand and is not available to purchase from any other manufacturer.**

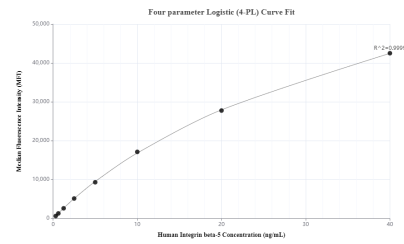
# Selected Validation Data



Sandwich ELISA standard curve of MP00512-4, Integrin Beta 5 Recombinant Matched Antibody Pair - PBS only. 83514-3-PBS was coated to a plate as the capture antibody and incubated with serial dilutions of standard Ag29783.83514-1-PBS was HRP conjugated as the detection antibody. Range: 9.766-625 pg/mL



The mean Integrin Beta 5 concentration was determined to be 275.71 pg/mL in HeLa cell extract based on a 2.8 mg/mL extract load and 190.06 pg/mL in MCF-7 cell extract based on a 3.1 mg/mL extract load.



Cytometric bead array standard curve of MP00512-3, Integrin Beta 5 Recombinant Matched Antibody Pair, PBS Only. Capture antibody: 83514-4-PBS. Detection antibody: 83514-1-PBS. Standard: Ag29783. Range: 0.313-40 ng/mL