

For Research Use Only

MDC1 Recombinant antibody, PBS Only (Capture)

Catalog Number: 83496-5-PBS



Basic Information

Catalog Number:

83496-5-PBS

Size:

1 mg/ml

Source:

Rabbit

Isotype:

IgG

Immunogen Catalog Number:

AG20135

GenBank Accession Number:

BC152556

GeneID (NCBI):

9656

UNIPROT ID:

Q14676

Full Name:

mediator of DNA damage checkpoint

1

Calculated MW:

2089 aa, 227 kDa

Purification Method:

Protein A purification

CloneNo.:

240469G11

Applications

Tested Applications:

Cytometric bead array, Sandwich ELISA, Indirect ELISA, Sample test

Species Specificity:

human

Background Information

Storage

Storage:

Store at -80°C.

The product is shipped with ice packs. Upon receipt, store it immediately at -80°C

Storage Buffer:

PBS Only

For technical support and original validation data for this product please contact:

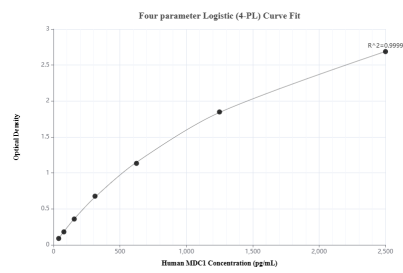
T: 4006900926

E: Proteintech-CN@ptglab.com

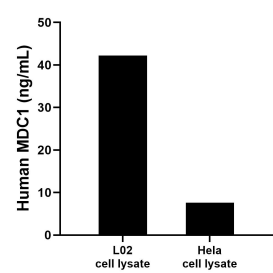
W: ptgcn.com

This product is exclusively available under Proteintech Group brand and is not available to purchase from any other manufacturer.

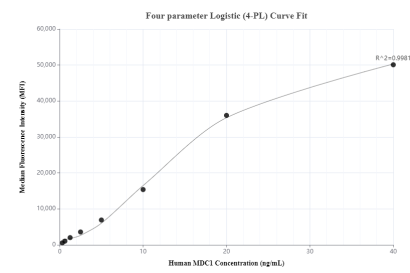
Selected Validation Data



Sandwich ELISA standard curve of MP00487-1, Human MDC1 Recombinant Matched Antibody Pair - PBS only. 83496-5-PBS was coated to a plate as the capture antibody and incubated with serial dilutions of standard Ag20135. 83496-1-PBS was HRP conjugated as the detection antibody. Range: 39.06-2500 pg/mL



L02 and HeLa cell lysate were measured. The human MDC1 concentration of detected samples was determined to be 42.2 ng/mL (based on a 2.6 mg/mL extract load) in L02 cell lysate and 7.6 ng/mL (based on a 1.2 mg/mL extract load) in HeLa cell lysate.



Cytometric bead array standard curve of MP00487-1, MDC1 Recombinant Matched Antibody Pair, PBS Only. Capture antibody: 83496-5-PBS. Detection antibody: 83496-1-PBS. Standard: Ag20135. Range: 0.313-40 ng/mL