

For Research Use Only

# MDC1 Recombinant antibody, PBS Only (Detector)

Catalog Number: 83496-1-PBS



## Basic Information

Catalog Number:

83496-1-PBS

Size:

1 mg/ml

Source:

Rabbit

Isotype:

IgG

Immunogen Catalog Number:

AG20135

GenBank Accession Number:

BC152556

GeneID (NCBI):

9656

UNIPROT ID:

Q14676

Full Name:

mediator of DNA damage checkpoint

1

Calculated MW:

2089 aa, 227 kDa

Purification Method:

Protein A purification

CloneNo.:

240469D5

## Applications

Tested Applications:

WB, IF/ICC, Cytometric bead array, Sandwich ELISA, Indirect ELISA, Sample test

Species Specificity:

human

## Background Information

### Storage

Storage:

Store at -80°C.

The product is shipped with ice packs. Upon receipt, store it immediately at -80°C

Storage Buffer:

PBS Only

For technical support and original validation data for this product please contact:

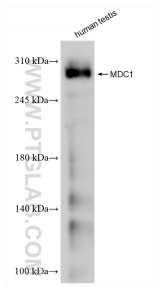
T: 4006900926

E: [Proteintech-CN@ptglab.com](mailto:Proteintech-CN@ptglab.com)

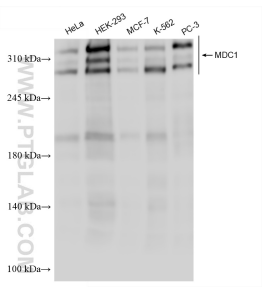
W: [ptgcn.com](http://ptgcn.com)

This product is exclusively available under Proteintech Group brand and is not available to purchase from any other manufacturer.

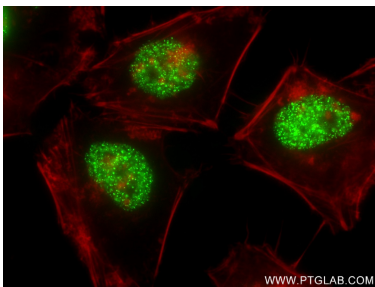
Selected Validation Data



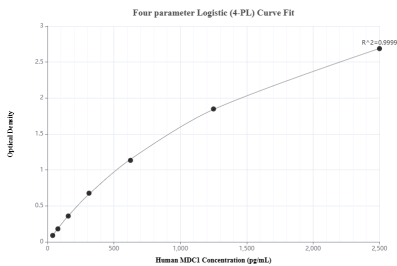
human testis tissue were subjected to SDS PAGE followed by western blot with 83496-1-RR (MDC1 antibody) at dilution of 1:1000 incubated at room temperature for 1.5 hours. This data was developed using the same antibody clone with 83496-1-PBS in a different storage buffer formulation.



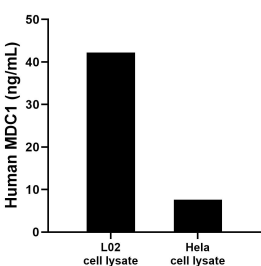
Various lysates were subjected to SDS PAGE followed by western blot with 83496-1-RR (MDC1 antibody) at dilution of 1:1000 incubated at room temperature for 1.5 hours. This data was developed using the same antibody clone with 83496-1-PBS in a different storage buffer formulation.



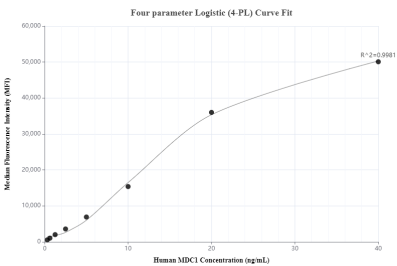
Immunofluorescent analysis of (4% PFA) fixed HeLa cells using MDC1 antibody (83496-1-RR, Clone: 240469D5 ) at dilution of 1:300 and CoraLite®488-Conjugated AffiniPure Goat Anti-Rabbit IgG(H+L) (SA00013-2), CL594-Phalloidin (red). This data was developed using the same antibody clone with 83496-1-PBS in a different storage buffer formulation.



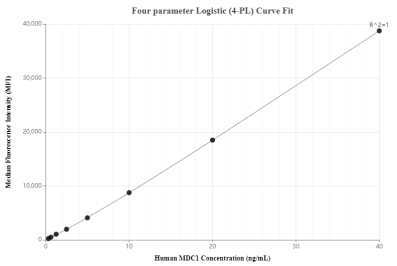
Sandwich ELISA standard curve of MP00487-1, Human MDC1 Recombinant Matched Antibody Pair - PBS only. 83496-5-PBS was coated to a plate as the capture antibody and incubated with serial dilutions of standard Ag20135. 83496-1-PBS was HRP conjugated as the detection antibody. Range: 39.06-2500 pg/mL



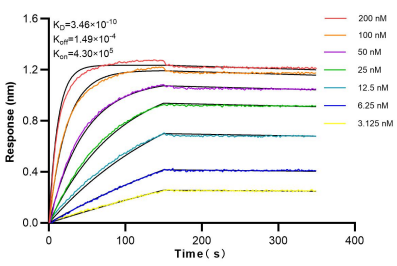
L02 and HeLa cell lysate were measured. The human MDC1 concentration of detected samples was determined to be 42.2 ng/mL (based on a 2.6 mg/mL extract load) in L02 cell lysate and 7.6 ng/mL (based on a 1.2 mg/mL extract load) in HeLa cell lysate.



Cytometric bead array standard curve of MP00487-1, MDC1 Recombinant Matched Antibody Pair, PBS Only. Capture antibody: 83496-5-PBS. Detection antibody: 83496-1-PBS. Standard: Ag20135. Range: 0.313-40 ng/mL.



Cytometric bead array standard curve of MP00487-3, MDC1 Recombinant Matched Antibody Pair, PBS Only. Capture antibody: 83496-2-PBS. Detection antibody: 83496-1-PBS. Standard: Ag20135. Range: 0.313-40 ng/mL



Biolayer interferometry (BLI) kinetic assays of 83496-1-RR against Human MDC1 were performed. The affinity constant is 0.346 nM.