

For Research Use Only

LAMR1/RPSA Recombinant antibody, PBS Only (Detector)

Catalog Number: 83495-6-PBS



Basic Information

Catalog Number: 83495-6-PBS	GenBank Accession Number: BC050688	Purification Method: Protein A purification
Concentration: 1 mg/ml	GeneID (NCBI): 3921	CloneNo.: 240461B1
Source: Rabbit	UNIPROT ID: P08865	
Isotype: IgG	Full Name: ribosomal protein SA	
Immunogen Catalog Number: AG6033	Calculated MW: 33 kDa	

Applications

Tested Applications:
Sandwich ELISA, Indirect ELISA, Sample test

Species Specificity:
human

Background Information

The ribosomal protein SA (RPSA), previously named 67 kD laminin receptor(67LR), 37 kD laminin receptor precursor (37LRP) and p40 ribosome-associated protein, is a multifunctional protein, that plays a role in a number of pathological processes, such as cancer and prion diseases. It is overexpressed in various cancer cell lines, and the level of the laminin receptor transcript is higher in colon carcinoma tissue and lung cancer cell line than their normal counterparts. This antibody is a rabbit polyclonal antibody raised against full length RPSA of human origin. This antibody is specific to RPSA (LAMR1). 67LR derives from homo- or hetero- dimerization of a 37 kDa cytosolic precursor (37LRP)], most probably by fatty acid acylation. 37LRP is mostly found in the cytosol and nucleus [10] where it is involved in translational processes and maintenance of nuclear structures, respectively. 67LR is localized at the cell surface and it not only serves as a receptor for LM but also acts as a receptor for elastin, carbohydrates and the cellular prion protein.

Storage

Storage:
Store at -80°C.
The product is shipped with ice packs. Upon receipt, store it immediately at -80°C

Storage Buffer:
PBS only, pH7.3

For technical support and original validation data for this product please contact:

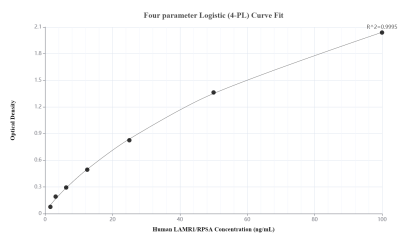
T: 4006900926

E: Proteintech-CN@ptglab.com

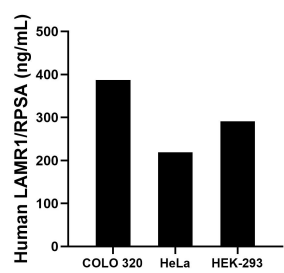
W: ptgcn.com

This product is exclusively available under Proteintech Group brand and is not available to purchase from any other manufacturer.

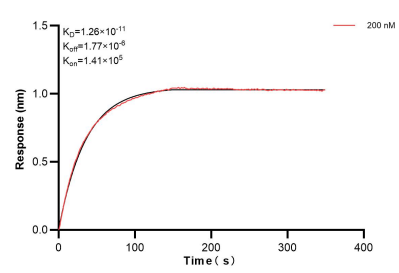
Selected Validation Data



Sandwich ELISA standard curve of MP00494-4, Human LAMR1/RPSA Recombinant Matched Antibody Pair - PBS only. 83495-1-PBS was coated to a plate as the capture antibody and incubated with serial dilutions of standard Ag6033. 83495-6-PBS was HRP conjugated as the detection antibody. Range: 1.56-100 ng/mL.



The mean LAMR1/RPSA concentration was determined to be 387.00 ng/mL in COLO 320 cell extract based on a 2.00 mg/mL extract load, 218.85 ng/mL in HeLa cell extract based on a 1.20 mg/mL extract load and 291.26 ng/mL in HEK-293 cell extract based on a 1.20 mg/mL extract load.



Biolayer interferometry (BLI) kinetic assay of 83495-6-PBS against Human LAMR1/RPSA was performed. The affinity constant is 12.6 pM.