

For Research Use Only

# LAMR1/RPSA Recombinant antibody, PBS Only (Capture)

Catalog Number: 83495-1-PBS



## Basic Information

Catalog Number:

83495-1-PBS

Size:

1 mg/ml

Source:

Rabbit

Isotype:

IgG

Immunogen Catalog Number:

AG6033

GenBank Accession Number:

BC050688

GeneID (NCBI):

3921

UNIPROT ID:

P08865

Full Name:

ribosomal protein SA

Calculated MW:

33 kDa

Purification Method:

Protein A purification

CloneNo.:

240461C6

## Applications

Tested Applications:

Cytometric bead array, Sandwich ELISA, Indirect ELISA,  
Sample test

Species Specificity:

human

## Background Information

### Storage

Storage:

Store at -80°C.

**The product is shipped with ice packs. Upon receipt, store it immediately at -80°C**

Storage Buffer:

PBS Only

For technical support and original validation data for this product please contact:

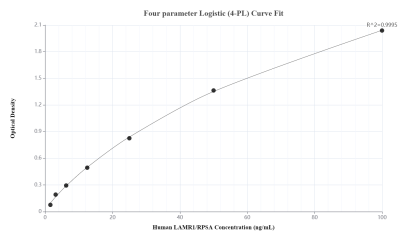
T: 4006900926

E: Proteintech-CN@ptglab.com

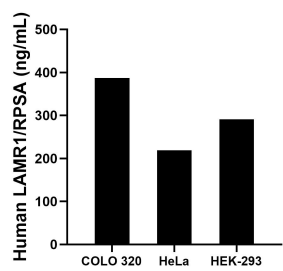
W: ptgcn.com

**This product is exclusively available under Proteintech Group brand and is not available to purchase from any other manufacturer.**

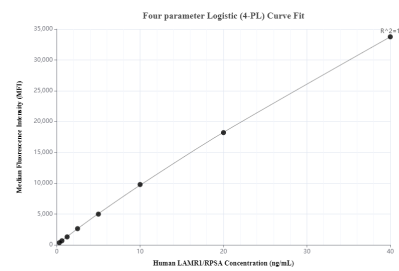
## Selected Validation Data



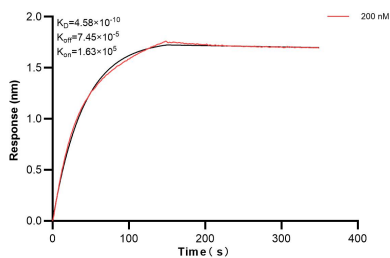
Sandwich ELISA standard curve of MP00494-4, Human LAMR1/RPSA Recombinant Matched Antibody Pair - PBS only. 83495-1-PBS was coated to a plate as the capture antibody and incubated with serial dilutions of standard Ag6033. 83495-6-PBS was HRP conjugated as the detection antibody. Range: 1.56-100 ng/mL.



The mean LAMR1/RPSA concentration was determined to be 387.00 ng/mL in COLO 320 cell extract based on a 2.00 mg/mL extract load, 218.85 ng/mL in HeLa cell extract based on a 1.20 mg/mL extract load and 291.26 ng/mL in HEK-293 cell extract based on a 1.20 mg/mL extract load.



Cytometric bead array standard curve of MP00494-1, LAMR1/RPSA Recombinant Matched Antibody Pair, PBS Only. Capture antibody: 83495-1-PBS. Detection antibody: 83495-4-PBS. Standard: Ag6033. Range: 0.313-40 ng/mL.



Biolayer interferometry (BLI) kinetic assay of 83495-1-PBS against Human LAMR1/RPSA was performed. The affinity constant is 0.458 nM.