

For Research Use Only

HTRA2 Recombinant antibody

Catalog Number: 83492-7-RR



Basic Information

Catalog Number:

83492-7-RR

Concentration:

1000 μ g/ml

Source:

Rabbit

Isotype:

IgG

Immunogen Catalog Number:

AG8455

GenBank Accession Number:

BC000096

GeneID (NCBI):

27429

UNIPROT ID:

O43464

Full Name:

HtrA serine peptidase 2

Calculated MW:

49 kDa

Observed MW:

36 kDa

Purification Method:

Protein A purification

CloneNo.:

240496D1

Recommended Dilutions:

WB 1:2000-1:10000

IF/ICC 1:125-1:500

Applications

Tested Applications:

WB, IF/ICC, FC (Intra), ELISA

Species Specificity:

human

Positive Controls:

WB : HEK-293 cells, HeLa cells, MCF-7 cells, Raji cells, Jurkat cells, human heart tissue

IF/ICC : HepG2 cells,

Background Information

HTRA2(High temperature requirement protein A2) is also named as OMI, PRSS25 and belongs to the peptidase S1B family. HTRA2 normally exists in the mitochondria, can cause MMP3 activation in the cytosol under a cell stress condition, which can ultimately lead to demise of dopaminergic neuronal cells(PMID: 22265821). It inhibits mitochondrial superoxide generation, stabilizes mitochondrial membrane potential, and prevents apoptosis at baseline and in response to extracellular inducers of mitochondrial stress(PMID: 18772386). This protein has 4 isoforms produced by alternative splicing.

Storage

Storage:

Store at -20°C. Stable for one year after shipment.

Storage Buffer:

PBS with 0.02% sodium azide and 50% glycerol

Aliquoting is unnecessary for -20°C storage

For technical support and original validation data for this product please contact:

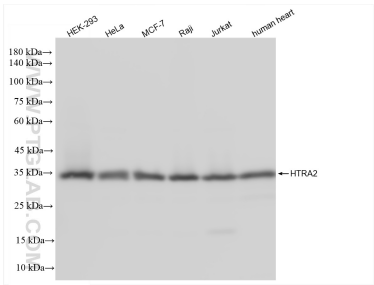
T: 4006900926

E: Proteintech-CN@ptglab.com

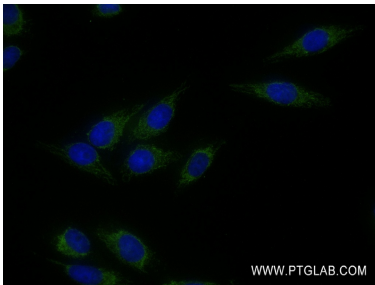
W: ptgcn.com

This product is exclusively available under Proteintech Group brand and is not available to purchase from any other manufacturer.

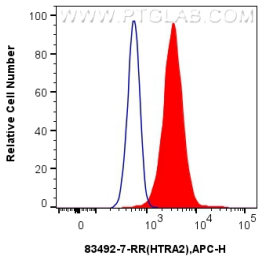
Selected Validation Data



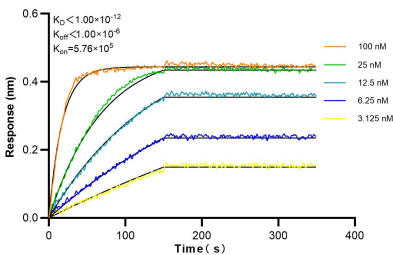
Various lysates were subjected to SDS PAGE followed by western blot with 83492-7-RR (HTRA2 antibody) at dilution of 1:5000 incubated at room temperature for 1.5 hours.



Immunofluorescent analysis of (4% PFA) fixed HepG2 cells using HTRA2 antibody (83492-7-RR, Clone: 240496D1) at dilution of 1:250 and CoraLite®488-Conjugated Goat Anti-Mouse IgG(H+L) (SA00013-1).



1x10⁶ HeLa cells were intracellularly stained with 0.25 ug HTRA2 Recombinant antibody (83492-7-RR, Clone:240496D1) and APC-Conjugated Goat Anti-Rabbit IgG(H+L)(red), or 0.25 ug Isotype Control (blue). Cells were fixed with 4% PFA and permeabilized with Flow Cytometry Perm Buffer (PF00011-C).



Bi-layer interferometry (BLI) kinetic assays of 83492-7-RR against Human HTRA2 were performed. The affinity constant is below 1 pM.