

For Research Use Only

uPAR/CD87 Recombinant antibody, PBS Only (Detector)

Catalog Number: 83491-2-PBS



Basic Information

Catalog Number:

83491-2-PBS

Size:

1 mg/ml

Source:

Rabbit

Isotype:

IgG

GenBank Accession Number:

NM_002659.4

GeneID (NCBI):

5329

UNIPROT ID:

Q03405-1

Full Name:

PLAUR

Calculated MW:

37 kDa

Purification Method:

Protein A purification

CloneNo.:

240366G2

Applications

Tested Applications:

IF/ICC, Cytometric bead array, Sandwich ELISA, Indirect ELISA, Sample test

Species Specificity:

human

Background Information

Storage

Storage:

Store at -80°C.

The product is shipped with ice packs. Upon receipt, store it immediately at -80°C

Storage Buffer:

PBS Only

For technical support and original validation data for this product please contact:

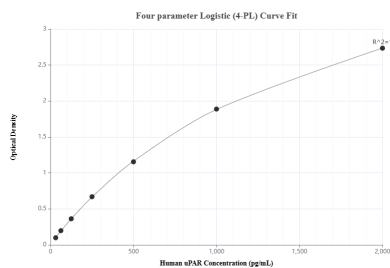
T: 4006900926

E: Proteintech-CN@ptglab.com

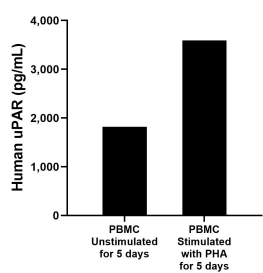
W: ptgcn.com

This product is exclusively available under Proteintech Group brand and is not available to purchase from any other manufacturer.

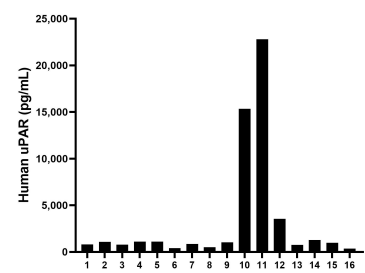
Selected Validation Data



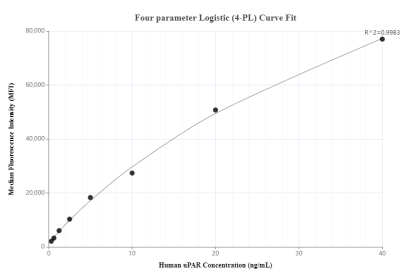
Sandwich ELISA standard curve of MP00129-3, Human uPAR/CD87 Recombinant Matched Antibody Pair - PBS only. 83491-1-PBS was coated to a plate as the capture antibody and incubated with serial dilutions of standard Eg0901. 83491-2-PBS was HRP conjugated as the detection antibody. Range: 31.25-2000 pg/mL



Human peripheral blood mononuclear cells (1×10^6 cells/mL) were cultured in RPMI-1640 supplemented with 10% fetal bovine serum, 100 U/mL penicillin, and 100 μ g/mL streptomycin sulfate. The cells were unstimulated or stimulated with 10 μ g/mL PHA. Aliquots of the cell culture supernates were removed on days 5 and assayed for levels of human uPAR/CD87.



Serum of sixteen individual healthy human donors was measured. The human uPAR/CD87 concentration of detected samples was determined to be 3,300.7 pg/mL with a range of 351.4 - 22,799.0 pg/mL.



Cytometric bead array standard curve of MP00129-3, uPAR/CD87 Recombinant Matched Antibody Pair, PBS Only. Capture antibody: 83491-1-PBS. Detection antibody: 83491-2-PBS. Standard: Eg0901. Range: 0.313-40 ng/mL