

For Research Use Only

# NELF Recombinant antibody, PBS Only (Detector)

Catalog Number: 83490-2-PBS



## Basic Information

Catalog Number:	GenBank Accession Number:	Purification Method:
83490-2-PBS	BC016862	Protein A purification
Size:	GeneID (NCBI):	CloneNo.:
1 mg/ml	26012	240482G1
Source:	UNIPROT ID:	
Rabbit	Q6X4W1	
Isotype:	Full Name:	
IgG	nasal embryonic LHRH factor	
Immunogen Catalog Number:	Calculated MW:	
AG34902	507 aa, 56 kDa	

## Applications

**Tested Applications:**  
WB, Cytometric bead array, Sandwich ELISA, Indirect ELISA, Sample test

**Species Specificity:**  
human

## Background Information

### Storage

**Storage:**  
Store at -80°C.  
**The product is shipped with ice packs. Upon receipt, store it immediately at -80°C**

**Storage Buffer:**  
PBS Only

For technical support and original validation data for this product please contact:

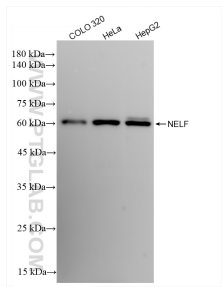
T: 4006900926

E: [Proteintech-CN@ptglab.com](mailto:Proteintech-CN@ptglab.com)

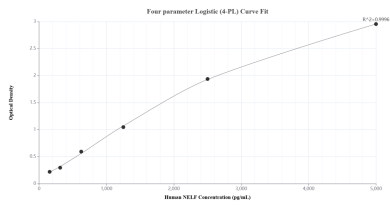
W: [ptgcn.com](http://ptgcn.com)

**This product is exclusively available under Proteintech Group brand and is not available to purchase from any other manufacturer.**

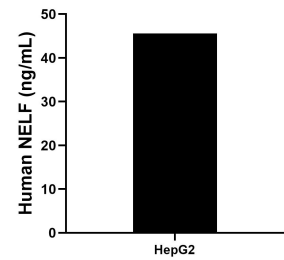
Selected Validation Data



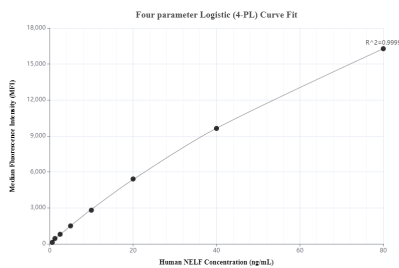
Various lysates were subjected to SDS PAGE followed by western blot with 83490-2-RR (NELF antibody) at dilution of 1:10000 incubated at room temperature for 1.5 hours. This data was developed using the same antibody clone with 83490-2-PBS in a different storage buffer formulation.



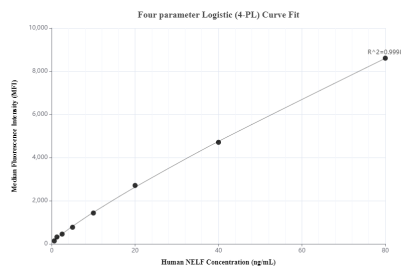
Sandwich ELISA standard curve of MP00490-1, Human NELF Recombinant Matched Antibody Pair - PBS only. 83490-1-PBS was coated to a plate as the capture antibody and incubated with serial dilutions of standard Ag34902. 83490-2-PBS was HRP conjugated as the detection antibody. Range: 156-5000 pg/mL.



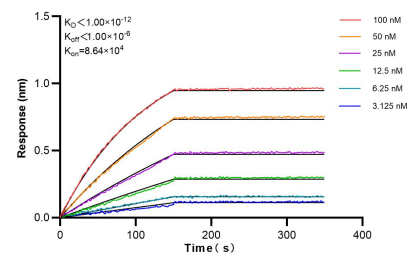
The mean NELF concentration was determined to be 45.6 ng/mL in HepG2 cell extract based on a 2.3 mg/mL extract load.



Cytometric bead array standard curve of MP00490-1, NELF Recombinant Matched Antibody Pair, PBS Only. Capture antibody: 83490-1-PBS. Detection antibody: 83490-2-PBS. Standard: Ag34902. Range: 0.625-80 ng/mL.



Cytometric bead array standard curve of MP00490-2, NELF Recombinant Matched Antibody Pair, PBS Only. Capture antibody: 83490-3-PBS. Detection antibody: 83490-2-PBS. Standard: Ag34902. Range: 0.625-80 ng/mL.



Bilayer interferometry (BLI) kinetic assays of 83490-2-RR against Human NELF were performed. The affinity constant is below 1 pM.