

For Research Use Only

NELF Recombinant antibody, PBS Only (Capture)

Catalog Number: 83490-1-PBS



Basic Information

Catalog Number:	83490-1-PBS	GenBank Accession Number:	BC016862	Purification Method:	Protein A purification
Size:	1 mg/ml	GeneID (NCBI):	26012	CloneNo.:	240482C5
Source:	Rabbit	UNIPROT ID:	Q6X4W1		
Isotype:	IgG	Full Name:	nasal embryonic LHRH factor		
Immunogen Catalog Number:	AG34902	Calculated MW:	507 aa, 56 kDa		

Applications

Tested Applications:
Cytometric bead array, Sandwich ELISA, Indirect ELISA, Sample test

Species Specificity:
human

Background Information

Storage

Storage:
Store at -80°C.
The product is shipped with ice packs. Upon receipt, store it immediately at -80°C

Storage Buffer:
PBS Only

For technical support and original validation data for this product please contact:

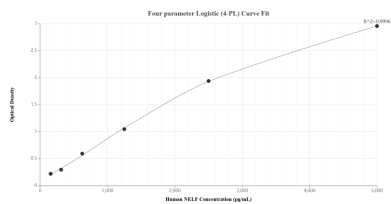
T: 4006900926

E: Proteintech-CN@ptglab.com

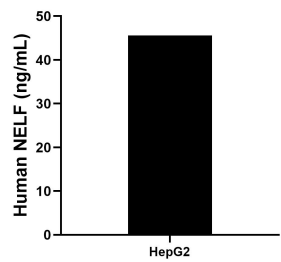
W: ptgcn.com

This product is exclusively available under Proteintech Group brand and is not available to purchase from any other manufacturer.

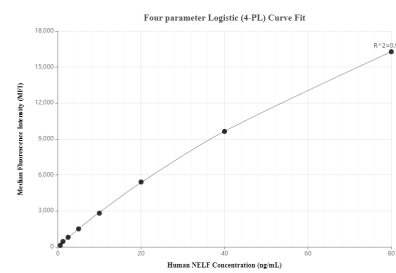
Selected Validation Data



Sandwich ELISA standard curve of MP00490-1, Human NELF Recombinant Matched Antibody Pair - PBS only. 83490-1-PBS was coated to a plate as the capture antibody and incubated with serial dilutions of standard Ag34902. 83490-2-PBS was HRP conjugated as the detection antibody. Range: 156-5000 pg/mL



The mean NELF concentration was determined to be 45.6 ng/mL in HepG2 cell extract based on a 2.3 mg/mL extract load.



Cytometric bead array standard curve of MP00490-1, NELF Recombinant Matched Antibody Pair, PBS Only. Capture antibody: 83490-1-PBS. Detection antibody: 83490-2-PBS. Standard: Ag34902. Range: 0.625-80 ng/mL