

For Research Use Only

RPP30 Recombinant antibody

Catalog Number: 83481-5-RR

Featured Product



Basic Information

Catalog Number:

83481-5-RR

Concentration:

1000 ug/ml

Source:

Rabbit

Isotype:

IgG

Immunogen Catalog Number:

AG8600

GenBank Accession Number:

BC006991

GeneID (NCBI):

10556

UNIPROT ID:

P78346

Full Name:

ribonuclease P/MRP 30kDa subunit

Calculated MW:

268 aa, 29 kDa

Observed MW:

30 kDa

Purification Method:

Protein A purification

CloneNo.:

240468E4

Recommended Dilutions:

WB 1:5000-1:50000

IHC 1:750-1:3000

IF/ICC 1:200-1:800

Applications

Tested Applications:

WB, IHC, IF/ICC, FC (Intra), ELISA

Species Specificity:

human, mouse

Note-IHC: suggested antigen retrieval with TE buffer pH 9.0; (*) Alternatively, antigen retrieval may be performed with citrate buffer pH 6.0

Positive Controls:

WB : HeLa cells, HEK-293 cells, NIH/3T3 cells, U-251 cells

IHC : human ovary cancer tissue,

IF/ICC : U-251 cells,

Background Information

RPP30 is a part of multimeric ribonuclease P complex and ribonuclease MRP complex. It is also a component of the MRP ribonuclease complex, which cleaves pre-rRNA sequences.

Storage

Storage:

Store at -20°C. Stable for one year after shipment.

Storage Buffer:

PBS with 0.02% sodium azide and 50% glycerol, pH7.3

Aliquoting is unnecessary for -20°C storage

For technical support and original validation data for this product please contact:

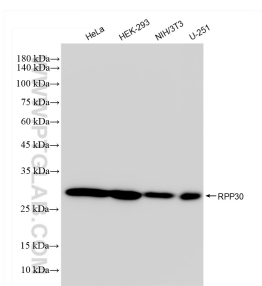
T: 4006900926

E: Proteintech-CN@ptglab.com

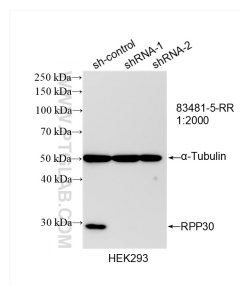
W: ptgcn.com

This product is exclusively available under Proteintech Group brand and is not available to purchase from any other manufacturer.

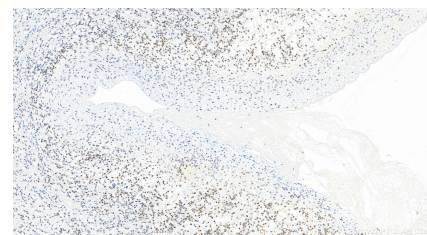
Selected Validation Data



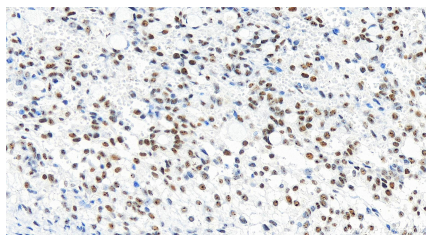
Various lysates were subjected to SDS PAGE followed by western blot with 83481-5-RR (RPP30 antibody) at dilution of 1:10000 incubated at room temperature for 1.5 hours.



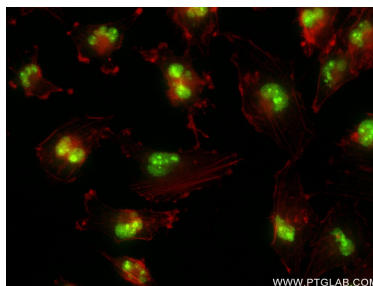
WB result of RPP30 antibody (83481-5-RR; 1:2000; incubated at room temperature for 1.5 hours) with sh-Control and sh-RPP30 transfected HEK-293 cells.



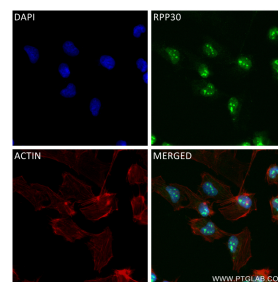
Immunohistochemical analysis of paraffin-embedded human ovary cancer tissue slide using 83481-5-RR (RPP30 antibody) at dilution of 1:1500 (under 20x lens). Heat mediated antigen retrieval with Tris-EDTA buffer (pH 9.0).



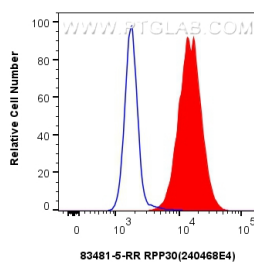
Immunohistochemical analysis of paraffin-embedded human ovary cancer tissue slide using 83481-5-RR (RPP30 antibody) at dilution of 1:1500 (under 20x lens). Heat mediated antigen retrieval with Tris-EDTA buffer (pH 9.0).



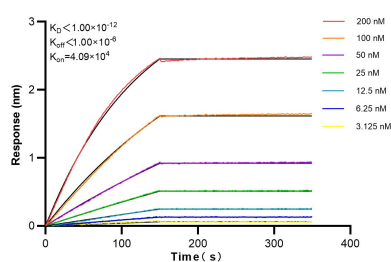
Immunofluorescent analysis of (4% PFA) fixed U-251 cells using RPP30 antibody (83481-5-RR, Clone: 240468E4) at dilution of 1:400 and CoraLite@488-Conjugated AffiniPure Goat Anti-Rabbit IgG(H+L) (SA00013-2), CL594-Phalloidin (red).



Immunofluorescent analysis of (4% PFA) fixed U-251 cells using RPP30 antibody (83481-5-RR, Clone: 240468E4) at dilution of 1:400 and CoraLite@488-Conjugated Goat Anti-Rabbit IgG(H+L) (SA00013-2), CL594-Phalloidin (red).



1x10⁶ U-251 cells were intracellularly stained with 0.25 μ g RPP30 Recombinant antibody (83481-5-RR, Clone:240468E4) and CoraLite@488-Conjugated Goat Anti-Rabbit IgG(H+L) (SA00013-2) (red), or 0.25 μ g Rabbit IgG Isotype Control Recombinant Antibody (98136-1-RR, Clone: 240953C9) (blue). Cells were fixed and permeabilized with Transcription Factor Staining Buffer Kit (PF00011).



Biolayer interferometry (BLI) kinetic assays of 83481-5-RR against Human RPP30 were performed. The affinity constant is below 1 pM.