

For Research Use Only

# MAGEA3 Recombinant antibody, PBS Only (Detector)

Catalog Number: 83480-5-PBS



## Basic Information

Catalog Number:	83480-5-PBS	GenBank Accession Number:	BC000340	Purification Method:	Protein A purification
Size:	1 mg/ml	GeneID (NCBI):	4102	CloneNo.:	240435G9
Source:	Rabbit	UNIPROT ID:	P43357		
Isotype:	IgG	Full Name:	melanoma antigen family A, 3		
Immunogen Catalog Number:	AG0265	Calculated MW:	314 aa, 35 kDa		
		Observed MW:	45 kDa		

## Applications

**Tested Applications:**  
WB, IF/ICC, FC (Intra), Cytometric bead array, Indirect ELISA

**Species Specificity:**  
human

## Background Information

MAGEA3 is a member of the MAGEA family, which belongs to chromosome X-clustered cancer/testis antigens. MAGEA3 is expressed in various human cancers including melanoma, brain, breast, lung, thyroid, colorectal, gastric, pancreatic and ovarian cancer. The aberrant expression of MAGEA3 is associated with poor clinical prognosis in many tumor types. The antibody is specific to MAGEA3.

## Storage

**Storage:**  
Store at -80°C.  
**The product is shipped with ice packs. Upon receipt, store it immediately at -80°C**

**Storage Buffer:**  
PBS Only

For technical support and original validation data for this product please contact:

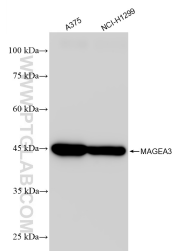
T: 4006900926

E: [Proteintech-CN@ptglab.com](mailto:Proteintech-CN@ptglab.com)

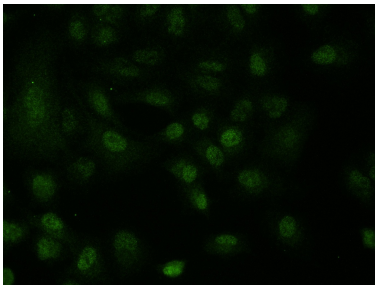
W: [ptgcn.com](http://ptgcn.com)

**This product is exclusively available under Proteintech Group brand and is not available to purchase from any other manufacturer.**

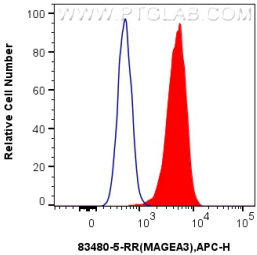
Selected Validation Data



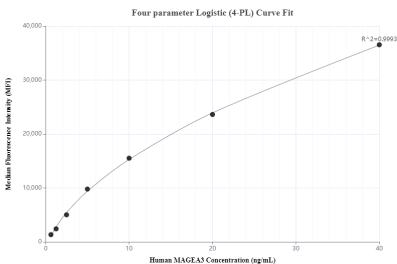
Various lysates were subjected to SDS PAGE followed by western blot with 83480-5-RR (MAGEA3 antibody) at dilution of 1:10000 incubated at room temperature for 1.5 hours. This data was developed using the same antibody clone with 83480-5-PBS in a different storage buffer formulation.



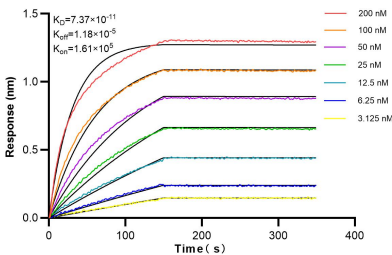
Immunofluorescent analysis of (4% PFA) fixed A549 cells using MAGEA3 antibody (83480-5-RR, Clone: 240435G9) at dilution of 1:400 and CoraLite®488-Conjugated AffiniPure Goat Anti-Rabbit IgG(H+L) (SA00013-2). This data was developed using the same antibody clone with 83480-5-PBS in a different storage buffer formulation.



1x10<sup>6</sup> HeLa cells were intracellularly stained with 0.25 ug MAGEA3 Recombinant antibody (83480-5-RR, Clone:240435G9) and APC-Conjugated AffiniPure Goat Anti-Rabbit IgG(H+L)(red), or 0.25 ug Isotype Control (blue). Cells were fixed and permeabilized with Transcription Factor Staining Buffer Kit (PF00011). This data was developed using the same antibody clone with 83480-5-PBS in a different storage buffer formulation.



Cytometric bead array standard curve of MP00467-3, MAGEA3 Recombinant Matched Antibody Pair, PBS Only. Capture antibody: 83480-1-PBS. Detection antibody: 83480-5-PBS. Standard: Ag0265. Range: 0.625-40 ng/mL



Biolayer interferometry (BLI) kinetic assays of 83480-5-RR against Human MAGEA3 were performed. The affinity constant is 73.7 pM.