

For Research Use Only

MAGEA3 Recombinant antibody, PBS Only (Capture/Detector)

Catalog Number: 83480-3-PBS



Basic Information

Catalog Number:

83480-3-PBS

Size:

1 mg/ml

Source:

Rabbit

Isotype:

IgG

Immunogen Catalog Number:

AG0265

GenBank Accession Number:

BC000340

GeneID (NCBI):

4102

UNIPROT ID:

P43357

Full Name:

melanoma antigen family A, 3

Calculated MW:

314 aa, 35 kDa

Purification Method:

Protein A purification

CloneNo.:

240435F8

Applications

Tested Applications:

Cytometric bead array, Sandwich ELISA, Indirect ELISA, Sample test

Species Specificity:

human

Background Information

Storage

Storage:

Store at -80°C.

The product is shipped with ice packs. Upon receipt, store it immediately at -80°C

Storage Buffer:

PBS Only

For technical support and original validation data for this product please contact:

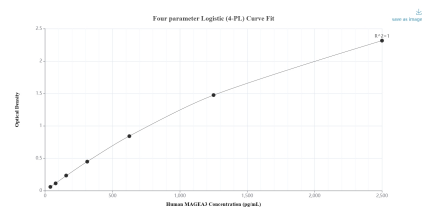
T: 4006900926

E: Proteintech-CN@ptglab.com

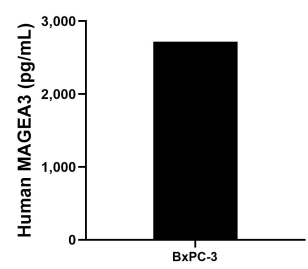
W: ptgcn.com

This product is exclusively available under Proteintech Group brand and is not available to purchase from any other manufacturer.

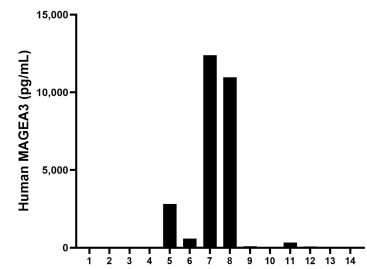
Selected Validation Data



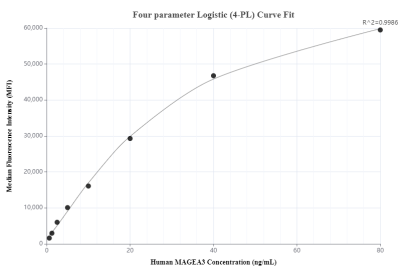
Sandwich ELISA standard curve of MP00467-4, Human MAGEA3 Recombinant Matched Antibody Pair - PBS only. 83480-6-PBS was coated to a plate as the capture antibody and incubated with serial dilutions of standard Ag0265. 83480-3-PBS was HRP conjugated as the detection antibody. Range: 39.1-2500 pg/mL.



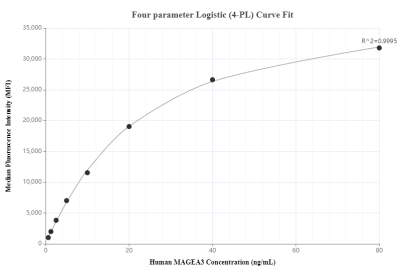
The mean MAGEA3 concentration was determined to be 2,719.3 pg/mL in BxPC-3 cell extract based on a 5.4 mg/mL extract load.



Serum of fourteen individual healthy human donors was measured. The MAGEA3 concentration of detected samples was determined to be 1,950.7 pg/mL with a range of ND - 12,398.4 pg/mL.



Cytometric bead array standard curve of MP00467-1, MAGEA3 Recombinant Matched Antibody Pair, PBS Only. Capture antibody: 83480-3-PBS. Detection antibody: 83480-2-PBS. Standard: Ag0265. Range: 0.625-80 ng/mL.



Cytometric bead array standard curve of MP00467-2, MAGEA3 Recombinant Matched Antibody Pair, PBS Only. Capture antibody: 83480-3-PBS. Detection antibody: 83480-4-PBS. Standard: Ag0265. Range: 0.625-80 ng/mL.