

For Research Use Only

MIG6; ERRF1 Recombinant antibody, PBS Only (Detector)

Catalog Number: 83475-2-PBS



Basic Information

Catalog Number: 83475-2-PBS	GenBank Accession Number: NM_018948	Purification Method: Protein A purification
Size: 1 mg/ml	GeneID (NCBI): 54206	CloneNo.: 240447C3
Source: Rabbit	UNIPROT ID: Q9UJM3	
Isotype: IgG	Full Name: ERBB receptor feedback inhibitor 1	
Immunogen Catalog Number: AG33341	Calculated MW: 51kd	
	Observed MW: 51 kDa	

Applications

Tested Applications:
WB, Cytometric bead array, Indirect ELISA

Species Specificity:
human

Background Information

ERRF1 (the product of mitogen-inducible gene 6, also known as MIG6) is an early response gene encoding a non-kinase scaffold adaptor protein induced by various stimuli such as hormones and stresses. ERRF1 is considered a negative regulator of EGFR because it can directly bind to EGFR, inhibit the catalytic activity of EGFR, and mediate EGFR lysosomal degradation. ERRF1 may play important roles in regulating stress response, maintaining homeostasis in tissues like joints or cardiac muscle, and functioning as a tumor suppressor.

Storage

Storage:
Store at -80°C.
The product is shipped with ice packs. Upon receipt, store it immediately at -80°C

Storage Buffer:
PBS Only

For technical support and original validation data for this product please contact:

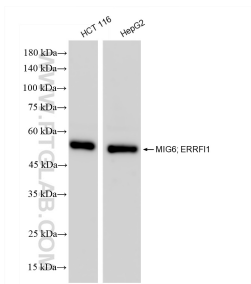
T: 4006900926

E: Proteintech-CN@ptglab.com

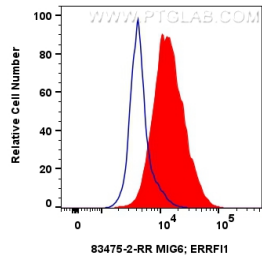
W: ptgcn.com

This product is exclusively available under Proteintech Group brand and is not available to purchase from any other manufacturer.

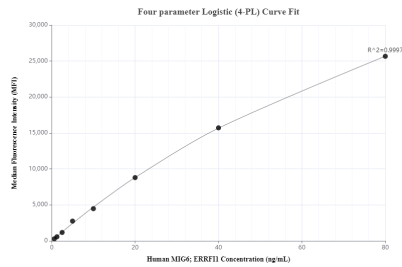
Selected Validation Data



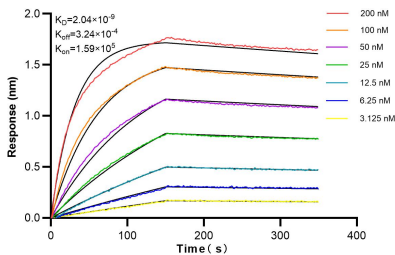
Various lysates were subjected to SDS PAGE followed by western blot with 83475-2-RR (MIG6; ERRF1 antibody) at dilution of 1:10000 incubated at room temperature for 1.5 hours. This data was developed using the same antibody clone with 83475-2-PBS in a different storage buffer formulation.



1x10⁶ HepG2 cells were intracellularly stained with 0.25 ug MIG6; ERRF1 Recombinant antibody (83475-2-RR, Clone:240447C3) and CoraLite®488-Conjugated Goat Anti-Rabbit IgG(H+L) (SA00013-2)(red), or 0.25 ug Rabbit IgG control Rabbit PolyAb (30000-O-AP) (blue). Cells were fixed with 4% PFA and permeabilized with Flow Cytometry Perm Buffer (PF00011-C). This data was developed using the same antibody clone with 83475-2-PBS in a



Cytometric bead array standard curve of MP00464-3, MIG6; ERRF1 Recombinant Matched Antibody Pair, PBS Only. Capture antibody: 83475-1-PBS. Detection antibody: 83475-2-PBS. Standard: Ag33341. Range: 0.625-80 ng/mL



Biolayer interferometry (BLI) kinetic assays of 83475-2-RR against Human MIG6; ERRF1 were performed. The affinity constant is 2.04 nM.