

For Research Use Only



TFF1 Recombinant antibody, PBS Only (Capture/Detector)

Catalog Number: 83467-1-PBS

Basic Information

| | | | | | |
|---------------------------|-------------|---------------------------|------------------|----------------------|------------------------|
| Catalog Number: | 83467-1-PBS | GenBank Accession Number: | BC032811 | Purification Method: | Protein A purification |
| Size: | 1 mg/ml | GeneID (NCBI): | 7031 | CloneNo.: | 240424E6 |
| Source: | Rabbit | UNIPROT ID: | P04155 | | |
| Isotype: | IgG | Full Name: | trefoil factor 1 | | |
| Immunogen Catalog Number: | AG4541 | Calculated MW: | 84 aa, 9 kDa | | |

Applications

Tested Applications:
Cytometric bead array, Sandwich ELISA, Indirect ELISA, Sample test

Species Specificity:
human

Background Information

Storage

Storage:
Store at -80°C.
The product is shipped with ice packs. Upon receipt, store it immediately at -80°C

Storage Buffer:
PBS Only

For technical support and original validation data for this product please contact:

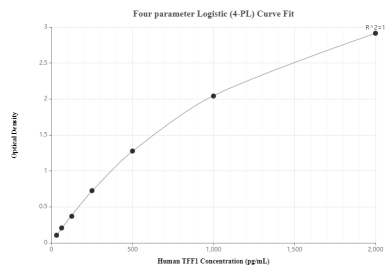
T: 4006900926

E: Proteintech-CN@ptglab.com

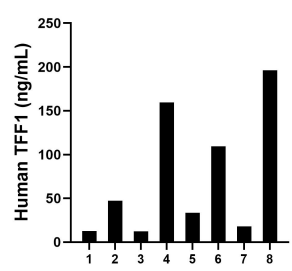
W: ptgcn.com

This product is exclusively available under Proteintech Group brand and is not available to purchase from any other manufacturer.

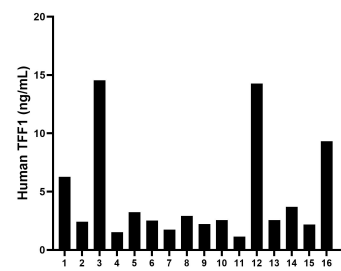
Selected Validation Data



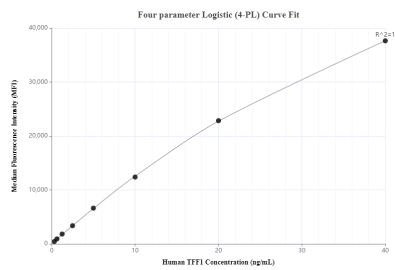
Sandwich ELISA standard curve of MP00469-2, TFF1 Recombinant Matched Antibody Pair - PBS only. 83467-1-PBS was coated to a plate as the capture antibody and incubated with serial dilutions of standard Ag4541. 83467-3-PBS was HRP conjugated as the detection antibody. Range: 31.25-2000 pg/mL.



Urine of eight individual healthy human donors was measured. The TFF1 concentration of detected samples was determined to be 73.7 ng/mL with a range of 12.4 - 196.2 ng/mL.



Serum of sixteen individual healthy human donors was measured. The TFF1 concentration of detected samples was determined to be 4.6 ng/mL with a range of 1.1 - 14.6 ng/mL.



Cytometric bead array standard curve of MP00469-1, TFF1 Recombinant Matched Antibody Pair, PBS Only. Capture antibody: 83467-2-PBS. Detection antibody: 83467-1-PBS. Standard: Ag4541. Range: 0.313-40 ng/mL.