

For Research Use Only

PMS1 Recombinant antibody, PBS Only

Catalog Number: 83456-6-PBS



Basic Information

Catalog Number:

83456-6-PBS

Size:

1 mg/ml

Source:

Rabbit

Isotype:

IgG

Immunogen Catalog Number:

AG28132

GenBank Accession Number:

BC096331

GeneID (NCBI):

5378

UNIPROT ID:

P54277

Full Name:

PMS1 postmeiotic segregation
increased 1 (S. cerevisiae)

Observed MW:

106 kDa

Purification Method:

Protein A purification

CloneNo.:

240408D9

Applications

Tested Applications:

WB, IHC, IF/ICC, FC (Intra), ELISA

Species Specificity:

human

Background Information

PMS1 Homolog 1 is a member of the DNA mismatch repair enzymes (MMREs) which is to eliminate the mismatch of insertions and deletions as a consequence of DNA polymerase errors at DNA synthesis in eukaryotes. PMS1 and MLH1 could form a heterodimer MutL β that belongs to MMREs (PMID:25619773). In the MMR system, the MutS complex recognizes the DNA mispairs firstly, and then the MLh1-Pms1 and other associated proteins such as PCNA, RFC, Exo1 were recruited, inducing Exonuclease 1 (Exo1)-dependent and -independent MMR pathways (PMID:24981171). Mutations in this gene cause hereditary nonpolyposis colorectal cancer (HNPCC), which is also known as Lynch syndrome. It was reported that PMS1 is a widely expressed protein and located in the nucleus. Alternative splicing allows for 4 isoforms of PMS1 protein.

Storage

Storage:

Store at -80°C.

The product is shipped with ice packs. Upon receipt, store it immediately at -80°C

Storage Buffer:

PBS Only

For technical support and original validation data for this product please contact:

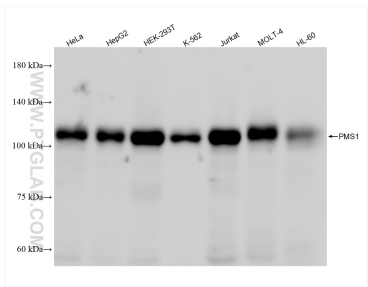
T: 4006900926

E: Proteintech-CN@ptglab.com

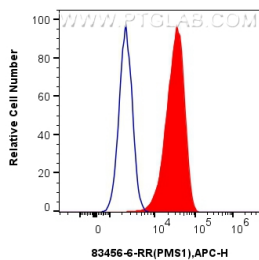
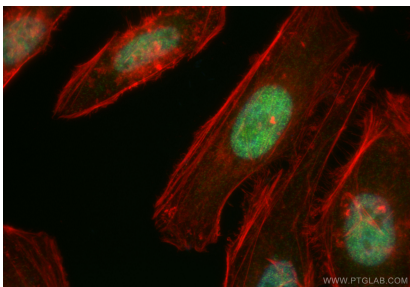
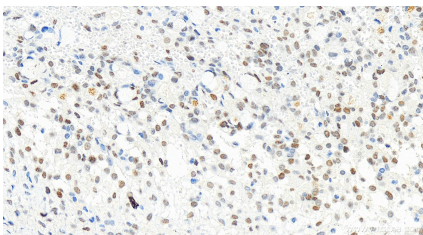
W: ptgcn.com

This product is exclusively available under Proteintech Group brand and is not available to purchase from any other manufacturer.

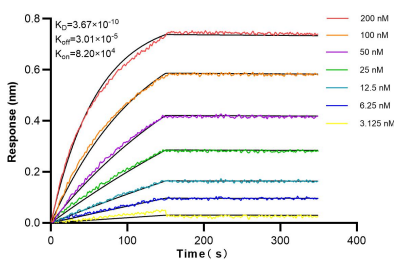
Selected Validation Data



Various lysates were subjected to SDS PAGE followed by western blot with 83456-6-RR (PMS1 antibody) at dilution of 1:1000 incubated at room temperature for 1.5 hours. This data was developed using the same antibody clone with 83456-6-PBS in a different storage buffer formulation.



1x10⁶ HeLa cells were intracellularly stained with 0.25 ug PMS1 Recombinant antibody (83456-6-RR, Clone:240408D9) and APC-Conjugated AffiniPure Goat Anti-Rabbit IgG(H+L)(red), or 0.25 ug Isotype Control (blue). Cells were fixed and permeabilized with Transcription Factor Staining Buffer Kit (PF00011). This data was developed using the same antibody clone with 83456-6-PBS in a different storage buffer formulation.



Biolayer interferometry (BLI) kinetic assays of 83456-6-RR against Human PMS1 were performed. The affinity constant is 0.367 nM.