

For Research Use Only

IFITM2 Recombinant antibody

Catalog Number: 83455-5-RR



Basic Information

Catalog Number:

83455-5-RR

Size:

1000 ug/ml

Source:

Rabbit

Isotype:

IgG

Immunogen Catalog Number:

AG3451

GenBank Accession Number:

BC009696

GeneID (NCBI):

10581

UNIPROT ID:

Q01629

Full Name:

interferon induced transmembrane protein 2 (1-8D)

Calculated MW:

132 aa, 15 kDa

Observed MW:

15 kDa

Purification Method:

Protein A purification

CloneNo.:

240318B6

Recommended Dilutions:

WB 1:5000-1:50000

IF/ICC 1:200-1:800

Applications

Tested Applications:

WB, IF/ICC, FC (Intra), ELISA

Species Specificity:

human

Positive Controls:

WB : HeLa cells, HepG2 cells, SGC-7901 cells, MCF-7 cells, A549 cells

IF/ICC : HepG2 cells,

Background Information

IFITM2, also named as 1-8D, belongs to the CD225 family. It is an IFN-induced antiviral protein that mediates cellular innate immunity to at least three major human pathogens, namely influenza A H1N1 virus, West Nile virus (WNV), and dengue virus, by inhibiting the early steps of replication. IFITM2 induces cell cycle arrest and mediates apoptosis by caspase activation and in a p53-independent manner. It is overexpressed in colon carcinoma. IFITM2 is a novel pro-apoptotic gene that will provide new insights into the regulated cellular pathways to death. IFITM proteins are recently identified as viral restriction factors that inhibit infection mediated by the influenza A virus (IAV) hemagglutinin (HA) protein. Also, they serve as important components of the innate immune system to restrict HIV-1 infection.

Storage

Storage:

Store at -20°C. Stable for one year after shipment.

Storage Buffer:

PBS with 0.02% sodium azide and 50% glycerol pH 7.3.

Aliquoting is unnecessary for -20°C storage

For technical support and original validation data for this product please contact:

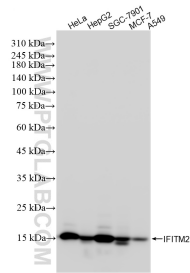
T: 4006900926

E: Proteintech-CN@ptglab.com

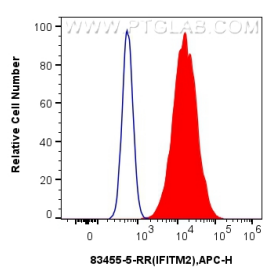
W: ptgcn.com

This product is exclusively available under Proteintech Group brand and is not available to purchase from any other manufacturer.

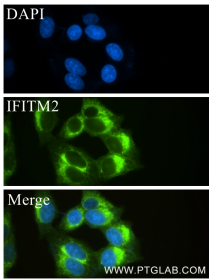
Selected Validation Data



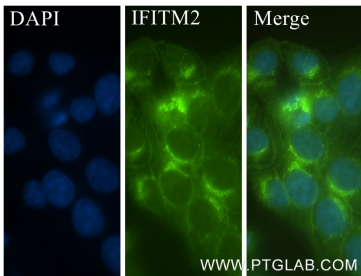
Various lysates were subjected to SDS PAGE followed by western blot with 83455-5-RR (IFITM2 antibody) at dilution of 1:20000 incubated at room temperature for 1.5 hours.



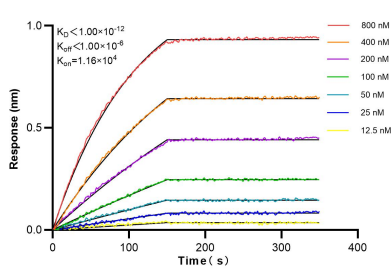
1x10⁶ MCF-7 cells were intracellularly stained with 0.25 ug IFITM2 Recombinant antibody (83455-5-RR, Clone:240318B6) and APC-Conjugated AffiniPure Goat Anti-Rabbit IgG(H+L)(red), or 0.25 ug Isotype Control (blue). Cells were fixed with 4% PFA and permeabilized with Flow Cytometry Perm Buffer (PF00011-C).



Immunofluorescent analysis of (-20°C Methanol) fixed HepG2 cells using IFITM2 antibody (83455-5-RR, Clone: 240318B6) at dilution of 1:400 and CoraLite®488-Conjugated Goat Anti-Rabbit IgG(H+L) (SA00013-2).



Immunofluorescent analysis of (-20°C Ethanol) fixed HepG2 cells using IFITM2 antibody (83455-5-RR, Clone: 240318B6) at dilution of 1:400 and CoraLite®488-Conjugated Goat Anti-Rabbit IgG(H+L) (SA00013-2).



Biolayer interferometry (BLI) kinetic assays of 83455-5-RR against Human IFITM2 were performed. The affinity constant is below 1 pM.