

For Research Use Only

ESR2 Recombinant antibody, PBS Only (Capture/Detector)

Catalog Number: 83447-2-PBS



Basic Information

Catalog Number:

83447-2-PBS

Size:

1 mg/ml

Source:

Rabbit

Isotype:

IgG

Immunogen Catalog Number:

AG5103

GenBank Accession Number:

BC024181

GeneID (NCBI):

2100

UNIPROT ID:

Q92731

Full Name:

estrogen receptor 2 (ER beta)

Calculated MW:

59 kDa

Purification Method:

Protein A purification

CloneNo.:

240412G9

Applications

Tested Applications:

Cytometric bead array, Sandwich ELISA, Indirect ELISA,
Sample test

Species Specificity:

human

Background Information

Storage

Storage:

Store at -80°C.

The product is shipped with ice packs. Upon receipt, store it immediately at -80°C

Storage Buffer:

PBS Only

For technical support and original validation data for this product please contact:

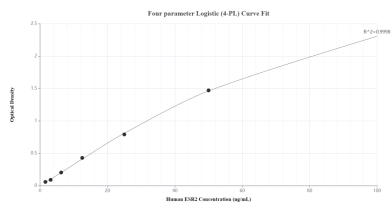
T: 4006900926

E: Proteintech-CN@ptglab.com

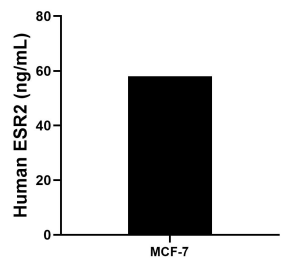
W: ptgcn.com

This product is exclusively available under Proteintech Group brand and is not available to purchase from any other manufacturer.

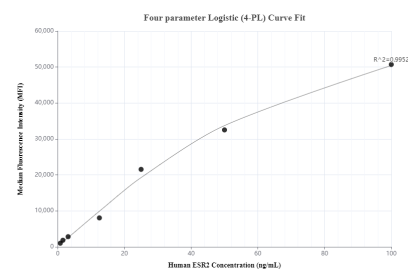
Selected Validation Data



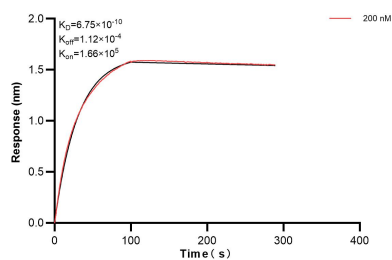
Sandwich ELISA standard curve of MP00441-3, Human ESR2 Recombinant Matched Antibody Pair - PBS only. 83447-4-PBS was coated to a plate as the capture antibody and incubated with serial dilutions of standard Ag5103. 83447-2-PBS was HRP conjugated as the detection antibody. Range: 1.56-100 ng/mL.



The mean ESR2 concentration was determined to be 58.05 ng/mL in MCF-7 cell extract based on a 4.30 mg/mL extract load.



Cytometric bead array standard curve of MP00441-1, ESR2 Recombinant Matched Antibody Pair, PBS Only. Capture antibody: 83447-2-PBS. Detection antibody: 83447-3-PBS. Standard: Ag5103. Range: 0.781-100 ng/mL.



Bi-layer interferometry (BLI) kinetic assay of 83447-2-PBS against Human ESR2 was performed. The affinity constant is 0.675 nM.