

For Research Use Only

# SLCO1A2 Recombinant antibody, PBS Only (Capture/Detector)



Catalog Number: 83446-1-PBS

## Basic Information

Catalog Number:

83446-1-PBS

Size:

1 mg/ml

Source:

Rabbit

Isotype:

IgG

Immunogen Catalog Number:

AG34497

GenBank Accession Number:

NM\_021094

GeneID (NCBI):

6579

UNIPROT ID:

P46721

Full Name:

solute carrier organic anion transporter family, member 1A2

Calculated MW:

670 aa, 74 kDa

Purification Method:

Protein A purification

CloneNo.:

240484B11

## Applications

Tested Applications:

Indirect ELISA, Cytometric bead array

Species Specificity:

Human

## Background Information

### Storage

Storage:

Store at -80°C.

The product is shipped with ice packs. Upon receipt, store it immediately at -80°C

Storage Buffer:

PBS Only

For technical support and original validation data for this product please contact:

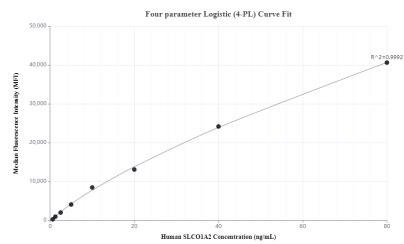
T: 4006900926

E: [Proteintech-CN@ptglab.com](mailto:Proteintech-CN@ptglab.com)

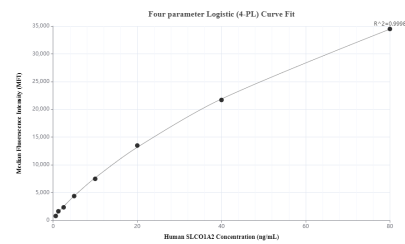
W: [ptgcn.com](http://ptgcn.com)

This product is exclusively available under Proteintech Group brand and is not available to purchase from any other manufacturer.

# Selected Validation Data



Cytometric bead array standard curve of MP00452-2, SLCO1A2 Recombinant Matched Antibody Pair, PBS Only. Capture antibody: 83446-1-PBS. Detection antibody: 83446-4-PBS. Standard: Ag34497. Range: 0.625-80 ng/mL



Cytometric bead array standard curve of MP00452-3, SLCO1A2 Recombinant Matched Antibody Pair, PBS Only. Capture antibody: 83446-2-PBS. Detection antibody: 83446-1-PBS. Standard: Ag34497. Range: 0.625-80 ng/mL