

For Research Use Only

# SLC2A10 Recombinant antibody, PBS Only



Catalog Number: 83441-3-PBS

## Basic Information

Catalog Number:

83441-3-PBS

Size:

1 mg/ml

Source:

Rabbit

Isotype:

IgG

Immunogen Catalog Number:

AG14210

GenBank Accession Number:

BC101657

GeneID (NCBI):

81031

UNIPROT ID:

O95528

Full Name:

solute carrier family 2 (facilitated glucose transporter), member 10

Calculated MW:

541 aa, 57 kDa

Purification Method:

Protein A purification

CloneNo.:

240335E12

## Applications

Tested Applications:

WB, ELISA

Species Specificity:

human, mouse

## Background Information

### Storage

Storage:

Store at -80°C.

The product is shipped with ice packs. Upon receipt, store it immediately at -80°C

Storage Buffer:

PBS Only

For technical support and original validation data for this product please contact:

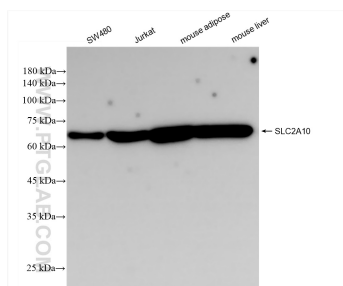
T: 4006900926

E: [Proteintech-CN@ptglab.com](mailto:Proteintech-CN@ptglab.com)

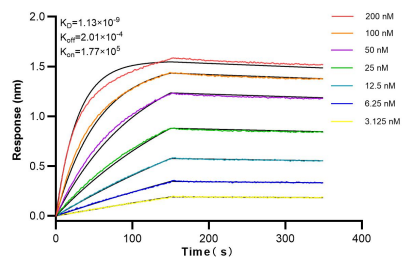
W: [ptgcn.com](http://ptgcn.com)

This product is exclusively available under Proteintech Group brand and is not available to purchase from any other manufacturer.

## Selected Validation Data



Various lysates were subjected to SDS PAGE followed by western blot with 83441-3-RR (SLC2A10 antibody) at dilution of 1:10000 incubated at room temperature for 1.5 hours. This data was developed using the same antibody clone with 83441-3-PBS in a different storage buffer formulation.



Biolayer interferometry (BLI) kinetic assays of 83441-3-RR against Human SLC2A10 were performed. The affinity constant is 0.43 nM.