

For Research Use Only

# TMEM126A Recombinant antibody, PBS Only (Capture)

Catalog Number: 83440-2-PBS



## Basic Information

Catalog Number:

83440-2-PBS

Size:

1 mg/ml

Source:

Rabbit

Isotype:

IgG

Immunogen Catalog Number:

AG14705

GenBank Accession Number:

BC007875

GeneID (NCBI):

84233

UNIPROT ID:

Q9H061

Full Name:

transmembrane protein 126A

Calculated MW:

195 aa, 22 kDa

Observed MW:

20-25 kDa

Purification Method:

Protein A purification

CloneNo.:

240425A11

## Applications

Tested Applications:

WB, IF/ICC, Cytometric bead array, Indirect ELISA

Species Specificity:

human

## Background Information

TMEM126A is a mitochondrial inner membrane protein that is enriched in the cristae. TMEM126A is necessary for Complex I assembly or stability. Complex I (CI) is the largest enzyme of the mitochondrial respiratory chain, and its defects are the main cause of mitochondrial disease.

## Storage

Storage:

Store at -80°C.

The product is shipped with ice packs. Upon receipt, store it immediately at -80°C

Storage Buffer:

PBS Only

For technical support and original validation data for this product please contact:

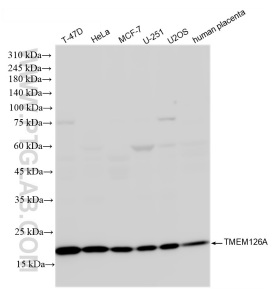
T: 4006900926

E: [Proteintech-CN@ptglab.com](mailto:Proteintech-CN@ptglab.com)

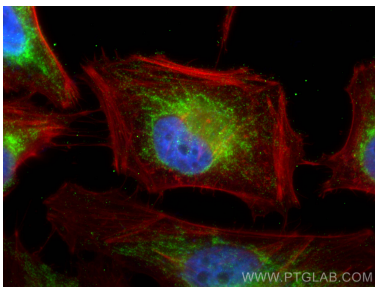
W: [ptgcn.com](http://ptgcn.com)

This product is exclusively available under Proteintech Group brand and is not available to purchase from any other manufacturer.

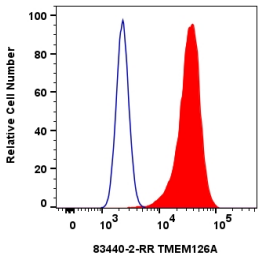
Selected Validation Data



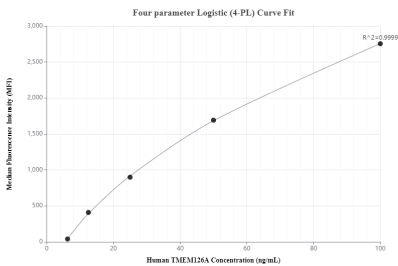
Various lysates were subjected to SDS PAGE followed by western blot with 83440-2-RR (TMEM126A antibody) at dilution of 1:5000 incubated at room temperature for 1.5 hours. This data was developed using the same antibody clone with 83440-2-PBS in a different storage buffer formulation.



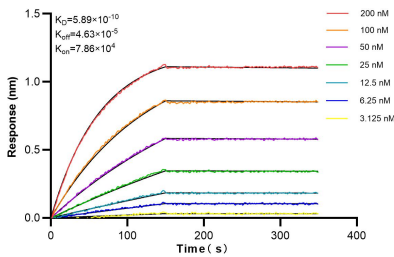
Immunofluorescent analysis of (4% PFA) fixed HeLa cells using TMEM126A antibody (83440-2-RR, Clone: 240425A11 ) at dilution of 1:1000 and Multi-rAb CoraLite® Plus 488-Goat Anti-Rabbit Recombinant Secondary Antibody (H+L) (RGAR002), CL594-Phalloidin (red). This data was developed using the same antibody clone with 83440-2-PBS in a different storage buffer formulation.



1x10<sup>6</sup> HeLa cells were intracellularly stained with 0.25 ug TMEM126A Recombinant antibody (83440-2-RR, Clone:240425A11) and CoraLite®488-Conjugated Goat Anti-Rabbit IgG(H+L) (SA00013-2)(red), or 0.25 ug Rabbit IgG Isotype Control Recombinant Antibody (98136-1-RR, Clone: 240953C9) (blue). Cells were fixed with 4% PFA and permeabilized with Flow Cytometry Perm Buffer (PF00011-C). This data was developed using the same antibody clone with 83440-2-PBS in a



Cytometric bead array standard curve of MP00449-1, TMEM126A Recombinant Matched Antibody Pair, PBS Only. Capture antibody: 83440-2-PBS. Detection antibody: 83440-1-PBS. Standard: Ag14705. Range: 6.25-100 ng/mL.



Biolayer interferometry (BLI) kinetic assays of 83440-2-RR against Human TMEM126A were performed. The affinity constant is 0.589 nM.