

For Research Use Only

# TREM2 Recombinant antibody, PBS Only (Capture/Detector)

Catalog Number: 83438-5-PBS



## Basic Information

Catalog Number:

83438-5-PBS

Size:

1 mg/ml

Source:

Rabbit

Isotype:

IgG

GenBank Accession Number:

BC032362

GeneID (NCBI):

54209

UNIPROT ID:

Q9NZC2

Full Name:

triggering receptor expressed on  
myeloid cells 2

Calculated MW:

222 aa, 25 kDa

Purification Method:

Protein A purification

CloneNo.:

240384G3

## Applications

Tested Applications:

Cytometric bead array, Sandwich ELISA, Indirect ELISA,  
Sample test

Species Specificity:

human

## Background Information

### Storage

Storage:

Store at -80°C.

The product is shipped with ice packs. Upon receipt, store it immediately at -80°C

Storage Buffer:

PBS Only

For technical support and original validation data for this product please contact:

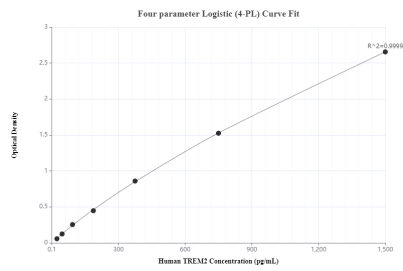
T: 4006900926

E: [Proteintech-CN@ptglab.com](mailto:Proteintech-CN@ptglab.com)

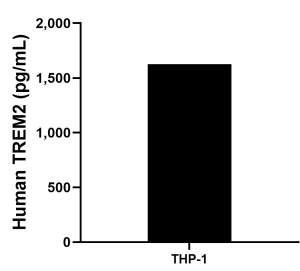
W: [ptgcn.com](http://ptgcn.com)

This product is exclusively available under Proteintech Group brand and is not available to purchase from any other manufacturer.

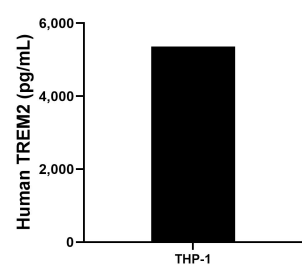
Selected Validation Data



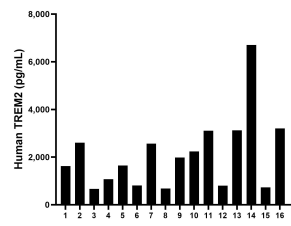
Sandwich ELISA standard curve of MP00440-4, Human TREM2 Monoclonal Matched Antibody Pair - PBS only. 83438-5-PBS was coated to a plate as the capture antibody and incubated with serial dilutions of standard Eg0747. 83438-7-PBS was HRP conjugated as the detection antibody. Range: 23.4-1500 pg/mL



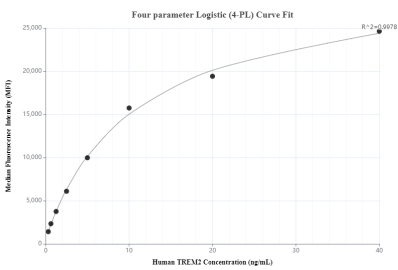
THP-1 cells ( $3 \times 10^6$  cells/mL) were cultured in RPMI with 10% fetal bovine serum, 50  $\mu$  M  $\beta$  - mercaptoethanol, 2 mM L-glutamine, 100 U/mL penicillin, and 100  $\mu$  g/mL streptomycin sulfate. Aliquots of the cell culture supernatants were removed and assayed for levels of human TREM2 and measured 1,626.6 pg/mL.



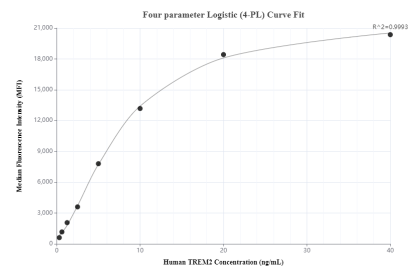
The mean human TREM2 concentration was determined to be 5,362.2 pg/mL in THP-1 cell extract based on a 3.0 mg/mL extract load.



Serum of sixteen individual healthy human donors were measured. The human TREM2 concentration of detected samples was determined to be 2,096.2 pg/mL with a range of 661.9-6,705.0 pg/mL



Cytometric bead array standard curve of MP00440-2, TREM2 Recombinant Matched Antibody Pair, PBS Only. Capture antibody: 83438-3-PBS. Detection antibody: 83438-5-PBS. Standard: Eg0747. Range: 0.313-40 ng/mL.



Cytometric bead array standard curve of MP00440-3, TREM2 Recombinant Matched Antibody Pair, PBS Only. Capture antibody: 83438-4-PBS. Detection antibody: 83438-5-PBS. Standard: Eg0747. Range: 0.313-40 ng/mL.