

For Research Use Only

# PTDSS1 Recombinant antibody

Catalog Number: 83421-1-RR



## Basic Information

<b>Catalog Number:</b> 83421-1-RR	<b>GenBank Accession Number:</b> BC002376	<b>Purification Method:</b> Protein A purification
<b>Size:</b> 600 ug/ml	<b>GeneID (NCBI):</b> 9791	<b>CloneNo.:</b> 240007G3
<b>Source:</b> Rabbit	<b>UNIPROT ID:</b> P48651	<b>Recommended Dilutions:</b> IF/ICC 1:200-1:800
<b>Isotype:</b> IgG	<b>Full Name:</b> phosphatidylserine synthase 1	
<b>Immunogen Catalog Number:</b> AG14170	<b>Calculated MW:</b> 473 aa, 56 kDa	

## Applications

<b>Tested Applications:</b> IF/ICC, FC (Intra), ELISA	<b>Positive Controls:</b> IF/ICC : Hela cells,
<b>Species Specificity:</b> human	

## Background Information

Phosphatidylserine Synthase-1 (PTDSS1 or PSS1) is one of two enzymes involved in the production of phosphatidylserine (PS), which is a quantitatively minor, but physiologically important phospholipid in mammalian cells (PMID: 24241535). Mice lacking either Ptdss1 or Ptdss2 are viable, phenotypically normal and fertile, indicating that, in mice, PSS1 and PSS2 can compensate for each other (PMID: 18343815).

## Storage

**Storage:**  
Store at -20°C. Stable for one year after shipment.  
**Storage Buffer:**  
PBS with 0.02% sodium azide and 50% glycerol pH 7.3.  
**Aliquoting is unnecessary for -20°C storage**

For technical support and original validation data for this product please contact:

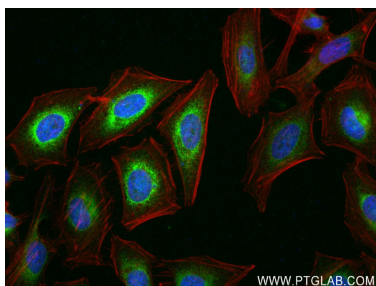
T: 4006900926

E: [Proteintech-CN@ptglab.com](mailto:Proteintech-CN@ptglab.com)

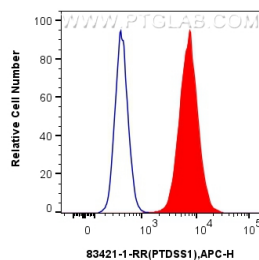
W: [ptgcn.com](http://ptgcn.com)

This product is exclusively available under Proteintech Group brand and is not available to purchase from any other manufacturer.

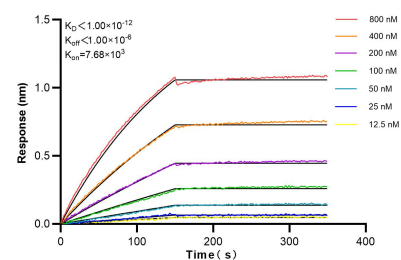
## Selected Validation Data



Immunofluorescent analysis of (4% PFA) fixed HeLa cells using PTDSS1 antibody (83421-1-RR, Clone: 240007G3 ) at dilution of 1:400 and CoraLite®488-Conjugated Goat Anti-Rabbit IgG(H+L) (SA00013-2), CL594-Phalloidin (red).



1x10<sup>6</sup> HepG2 cells were intracellularly stained with 0.25 ug PTDSS1 Recombinant antibody (83421-1-RR, Clone:240007G3) and APC-Conjugated AffiniPure Goat Anti-Rabbit IgG(H+L) (red), or 0.25 ug Isotype Control (blue). Cells were fixed with 4% PFA and permeabilized with Flow Cytometry Perm Buffer (PF00011-C).



Biolayer interferometry (BLI) kinetic assays of 83421-1-RR against Human PTDSS1 were performed. The affinity constant is below 1 pM.