

For Research Use Only

# CD141/Thrombomodulin Recombinant antibody, PBS Only (Capture)

Catalog Number: 83416-1-PBS



## Basic Information

Catalog Number:

83416-1-PBS

Size:

1 mg/ml

Source:

Rabbit

Isotype:

IgG

GenBank Accession Number:

NM\_000361.3

GeneID (NCBI):

7056

UNIPROT ID:

P07204

Full Name:

thrombomodulin

Calculated MW:

60 kDa

Purification Method:

Protein A purification

CloneNo.:

240365A10

## Applications

Tested Applications:

Cytometric bead array, Sandwich ELISA, Indirect ELISA,  
Sample test

Species Specificity:

human

## Background Information

### Storage

Storage:

Store at -80°C.

**The product is shipped with ice packs. Upon receipt, store it immediately at -80°C**

Storage Buffer:

PBS Only

For technical support and original validation data for this product please contact:

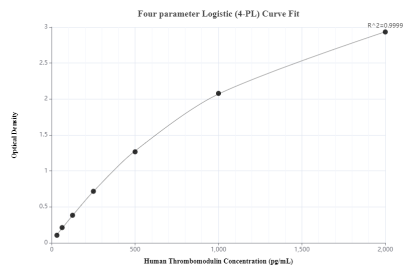
T: 4006900926

E: Proteintech-CN@ptglab.com

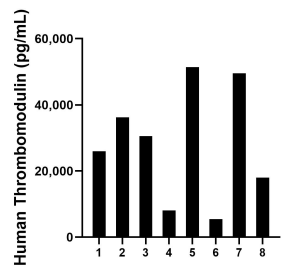
W: ptgcn.com

**This product is exclusively available under Proteintech Group brand and is not available to purchase from any other manufacturer.**

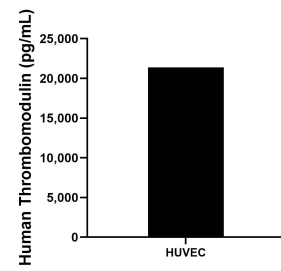
Selected Validation Data



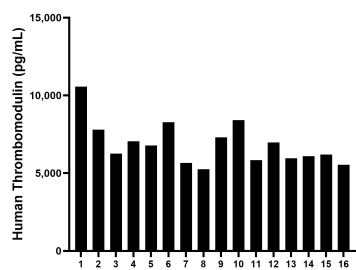
Sandwich ELISA standard curve of MP00411-3, Human CD141/Thrombomodulin Recombinant Matched Antibody Pair - PBS only. 83416-1-PBS was coated to a plate as the capture antibody and incubated with serial dilutions of standard Eg0944. 83416-7-PBS was HRP conjugated as the detection antibody. Range: 31.3-2000 pg/mL.



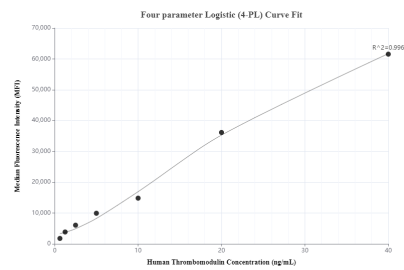
Urine of eight individual healthy human donors was measured. The CD141/Thrombomodulin concentration of detected samples was determined to be 28,157.6 pg/mL with a range of 5,473.9 - 51,428.0 pg/mL.



The mean CD141/Thrombomodulin concentration was determined to be 21,389.33 pg/mL in HUVEC cell extract based on a 1.8 mg/mL extract load.



Serum of sixteen individual healthy human donors was measured. The CD141/Thrombomodulin concentration of detected samples was determined to be 6,871.5 pg/mL with a range of 5,248.2 - 10,568.0 pg/mL.



Cytometric bead array standard curve of MP00411-1, CD141/Thrombomodulin Recombinant Matched Antibody Pair, PBS Only. Capture antibody: 83416-1-PBS. Detection antibody: 83416-2-PBS. Standard: Eg0944. Range: 0.625-40 ng/mL.