

For Research Use Only

# Mouse Osteopontin Recombinant antibody, PBS Only (Detector)

Catalog Number: 83413-4-PBS



## Basic Information

Catalog Number:

83413-4-PBS

Size:

1 mg/ml

Source:

Rabbit

Isotype:

IgG

GenBank Accession Number:

NM\_001204233.1

GeneID (NCBI):

20750

UNIPROT ID:

Q547B5

Full Name:

secreted phosphoprotein 1

Calculated MW:

32kd

Purification Method:

Protein A purification

CloneNo.:

240250F11

## Applications

Tested Applications:

Cytometric bead array, Sandwich ELISA, Indirect ELISA, Sample test

Species Specificity:

mouse

## Background Information

### Storage

Storage:

Store at -80°C.

The product is shipped with ice packs. Upon receipt, store it immediately at -80°C

Storage Buffer:

PBS Only

For technical support and original validation data for this product please contact:

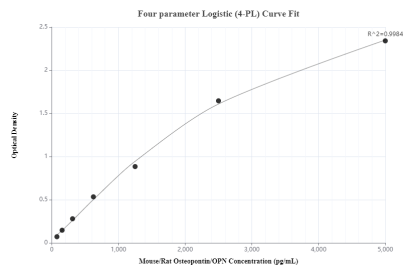
T: 4006900926

E: [Proteintech-CN@ptglab.com](mailto:Proteintech-CN@ptglab.com)

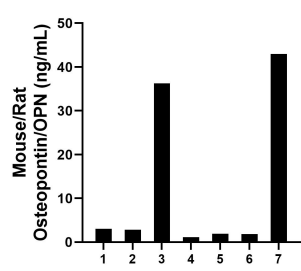
W: [ptgcn.com](http://ptgcn.com)

This product is exclusively available under Proteintech Group brand and is not available to purchase from any other manufacturer.

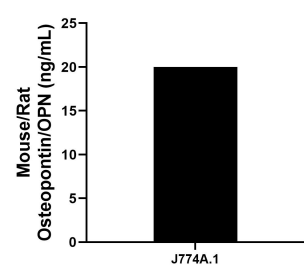
Selected Validation Data



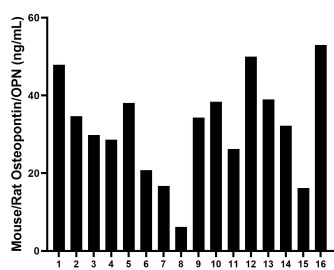
Sandwich ELISA standard curve of MP00400-2, mouse/rat Osteopontin Recombinant Matched Antibody Pair - PBS only. 83413-5-PBS was coated to a plate as the capture antibody and incubated with serial dilutions of standard Eg0317. 83413-4-PBS was HRP conjugated as the detection antibody. Range: 78.1-5000 pg/mL



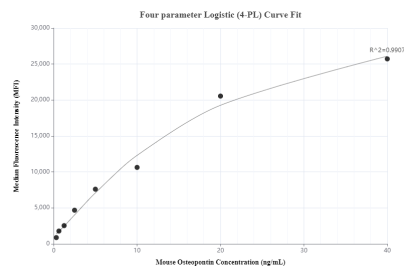
Serum of seven rats was measured. The Osteopontin concentration of detected samples was determined to be 12.8 ng/mL with a range of 1.1 - 43.0 ng/mL



J774A.1 mouse reticulum cell sarcoma macrophage cells were cultured in DMEM supplemented with 10% fetal bovine serum, 2.5 mM L-glutamine, 100 U/mL penicillin and 100 µg/mL streptomycin sulfate. An aliquot of the cell culture supernatant was removed, assayed for mouse/rat Osteopontin and measured 20.0 ng/mL



Serum of sixteen mice was measured. The Osteopontin concentration of detected samples was determined to be 32.0 ng/mL with a range of 6.2 - 53.0 ng/mL



Cytometric bead array standard curve of MP00400-2, MOUSE Osteopontin Recombinant Matched Antibody Pair, PBS Only. Capture antibody: 83413-5-PBS. Detection antibody: 83413-4-PBS. Standard: Eg0317. Range: 0.313-40 ng/mL