

For Research Use Only

# SLC6A7 Recombinant antibody, PBS Only

Catalog Number: 83412-4-PBS



## Basic Information

Catalog Number:

83412-4-PBS

Size:

1 mg/ml

Source:

Rabbit

Isotype:

IgG

Immunogen Catalog Number:

AG34413

GenBank Accession Number:

BC093785

GeneID (NCBI):

6534

UNIPROT ID:

Q99884

Full Name:

solute carrier family 6  
(neurotransmitter transporter, L-  
proline), member 7

Calculated MW:

636 aa, 71 kDa

Purification Method:

Protein A purification

CloneNo.:

240395H5

## Applications

Tested Applications:

IHC, ELISA

Species Specificity:

human, mouse, rat

## Background Information

SLC6A7 also known as PROT, belongs to the solute Carrier 6 gene family. SLC6A7 is a high-affinity mammalian brain L-proline transporter, which is different from other sodium-dependent plasma membrane carriers, and has unique pharmacological specificity, kinetic properties, and ionic requirements. SLC6A7 is a brain specific sodium (and chloride)-dependent proline transporter, that terminates the action of proline by its high affinity sodium-dependent reuptake into presynaptic terminals(PMID: 7651355).

## Storage

Storage:

Store at -80°C.

**The product is shipped with ice packs. Upon receipt, store it immediately at -80°C**

Storage Buffer:

PBS Only

For technical support and original validation data for this product please contact:

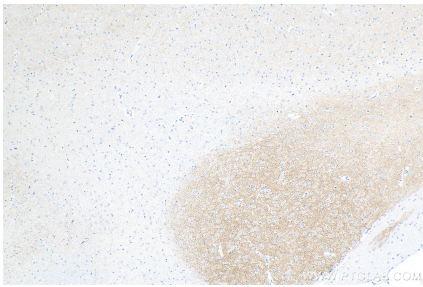
T: 4006900926

E: [Proteintech-CN@ptglab.com](mailto:Proteintech-CN@ptglab.com)

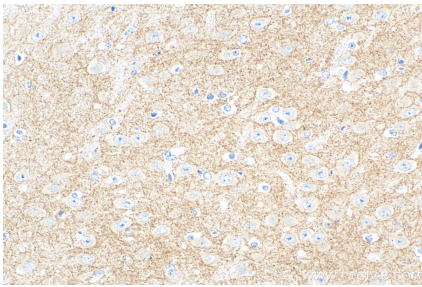
W: [ptgcn.com](http://ptgcn.com)

**This product is exclusively available under Proteintech Group brand and is not available to purchase from any other manufacturer.**

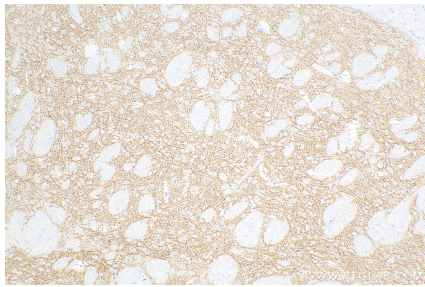
Selected Validation Data



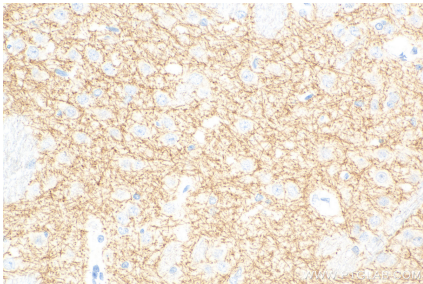
Immunohistochemical analysis of paraffin-embedded mouse brain tissue slide using 83412-4-RR (SLC6A7 antibody) at dilution of 1:400 (under 10x lens). Heat mediated antigen retrieval with Tris-EDTA buffer (pH 9.0). This data was developed using the same antibody clone with 83412-4-PBS in a different storage buffer formulation.



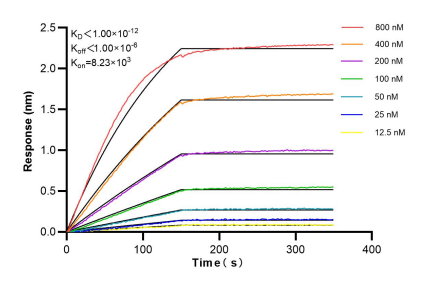
Immunohistochemical analysis of paraffin-embedded mouse brain tissue slide using 83412-4-RR (SLC6A7 antibody) at dilution of 1:400 (under 40x lens). Heat mediated antigen retrieval with Tris-EDTA buffer (pH 9.0). This data was developed using the same antibody clone with 83412-4-PBS in a different storage buffer formulation.



Immunohistochemical analysis of paraffin-embedded rat brain tissue slide using 83412-4-RR (SLC6A7 antibody) at dilution of 1:400 (under 10x lens). Heat mediated antigen retrieval with Tris-EDTA buffer (pH 9.0). This data was developed using the same antibody clone with 83412-4-PBS in a different storage buffer formulation.



Immunohistochemical analysis of paraffin-embedded rat brain tissue slide using 83412-4-RR (SLC6A7 antibody) at dilution of 1:400 (under 40x lens). Heat mediated antigen retrieval with Tris-EDTA buffer (pH 9.0). This data was developed using the same antibody clone with 83412-4-PBS in a different storage buffer formulation.



Biolayer interferometry (BLI) kinetic assays of 83412-4-RR against Human SLC6A 7 were performed. The affinity constant is below 1 pM.