

For Research Use Only

SLC6A7 Recombinant antibody, PBS Only (Detector)

Catalog Number: 83412-2-PBS



Basic Information

Catalog Number:

83412-2-PBS

Size:

1 mg/ml

Source:

Rabbit

Isotype:

IgG

Immunogen Catalog Number:

AG34413

GenBank Accession Number:

BC093785

GeneID (NCBI):

6534

UNIPROT ID:

Q99884

Full Name:

solute carrier family 6
(neurotransmitter transporter, L-
proline), member 7

Calculated MW:

636 aa, 71 kDa

Purification Method:

Protein A purification

CloneNo.:

240395E7

Applications

Tested Applications:

Cytometric bead array, Indirect ELISA

Species Specificity:

human

Background Information

Storage

Storage:

Store at -80°C.

The product is shipped with ice packs. Upon receipt, store it immediately at -80°C

Storage Buffer:

PBS Only

For technical support and original validation data for this product please contact:

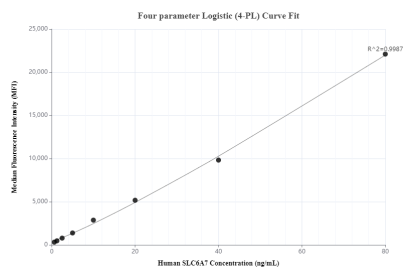
T: 4006900926

E: Proteintech-CN@ptglab.com

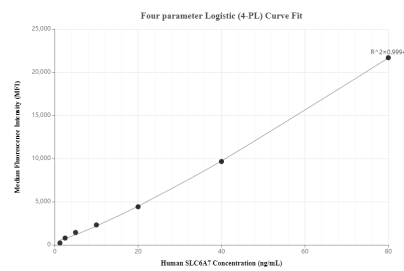
W: ptgcn.com

This product is exclusively available under Proteintech Group brand and is not available to purchase from any other manufacturer.

Selected Validation Data



Cytometric bead array standard curve of MP00399-1, SLC6A7 Recombinant Matched Antibody Pair, PBS Only. Capture antibody: 83412-3-PBS. Detection antibody: 83412-2-PBS. Standard: Ag34413. Range: 0.625-80 ng/mL



Cytometric bead array standard curve of MP00399-2, SLC6A7 Recombinant Matched Antibody Pair, PBS Only. Capture antibody: 83412-1-PBS. Detection antibody: 83412-2-PBS. Standard: Ag34413. Range: 1.25-80 ng/mL