

For Research Use Only

# Lactotransferrin/LTF Recombinant antibody

Catalog Number: 83409-5-RR



## Basic Information

Catalog Number:

83409-5-RR

Size:

1000 ug/ml

Source:

Rabbit

Isotype:

IgG

GenBank Accession Number:

NM\_002343.6

GeneID (NCBI):

4057

UNIPROT ID:

P02788-1

Full Name:

lactotransferrin

Calculated MW:

78 kDa

Observed MW:

30 kDa, 51 kDa, 80 kDa

Purification Method:

Protein A purification

CloneNo.:

240280E2

Recommended Dilutions:

WB 1:500-1:2000

## Applications

Tested Applications:

WB, ELISA

Species Specificity:

human

Positive Controls:

WB : human saliva,

## Background Information

LTF(Lactotransferrin) is also named as GIG12, LF and belongs to the transferrin family. It is an iron binding transport protein which can bind two atoms of ferric iron in association with the binding of an anion, usually bicarbonate. LTF is also an important protein component of the innate immune system that is broadly distributed within the body fluids. It can contribute to the activation of both the innate and adaptive immune responses by promoting the recruitment of leukocytes and activation of dendritic cells(PMID:18453607). This protein has 2 isoforms produced by alternative promoter usage. The human LTF can be isolated two fragments, an N-terminal tryptic fragment having an MW of 30 kDa and a C-terminal tryptic fragment having an MW of 50 kDa by a mild tryptic digest(PMID:3790094).

## Storage

Storage:

Store at -20°C. Stable for one year after shipment.

Storage Buffer:

PBS with 0.02% sodium azide and 50% glycerol pH 7.3.

Aliquoting is unnecessary for -20°C storage

For technical support and original validation data for this product please contact:

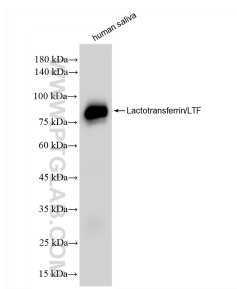
T: 4006900926

E: Proteintech-CN@ptglab.com

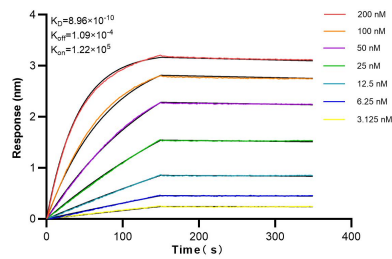
W: ptgcn.com

This product is exclusively available under Proteintech Group brand and is not available to purchase from any other manufacturer.

## Selected Validation Data



human saliva were subjected to SDS PAGE followed by western blot with 83409-5-RR (Lactotransferrin/LTF antibody) at dilution of 1:1000 incubated at room temperature for 1.5 hours.



Biolayer interferometry (BLI) kinetic assays of 83409-5-RR against Human Lactotransferrin/LTF were performed. The affinity constant is 0.896 nM.