

For Research Use Only

Lactotransferrin/LTF Recombinant antibody, PBS Only (Detector)



Catalog Number: 83409-1-PBS

Basic Information

Catalog Number:

83409-1-PBS

Size:

1 mg/ml

Source:

Rabbit

Isotype:

IgG

GenBank Accession Number:

NM_002343.6

GeneID (NCBI):

4057

UNIPROT ID:

P02788-1

Full Name:

lactotransferrin

Calculated MW:

78 kDa

Purification Method:

Protein A purification

CloneNo.:

240280A9

Applications

Tested Applications:

Cytometric bead array, Sandwich ELISA, Indirect ELISA, Sample test

Species Specificity:

human

Background Information

Storage

Storage:

Store at -80°C.

The product is shipped with ice packs. Upon receipt, store it immediately at -80°C

Storage Buffer:

PBS Only

For technical support and original validation data for this product please contact:

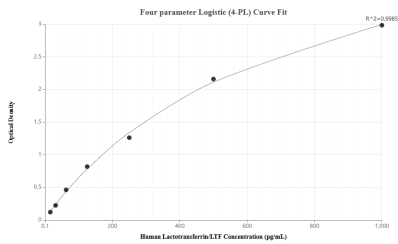
T: 4006900926

E: Proteintech-CN@ptglab.com

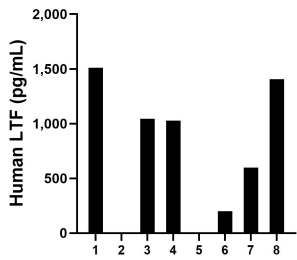
W: ptgcn.com

This product is exclusively available under Proteintech Group brand and is not available to purchase from any other manufacturer.

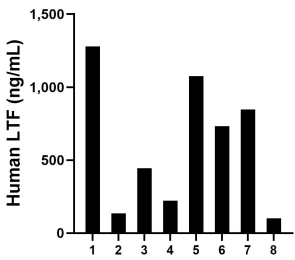
Selected Validation Data



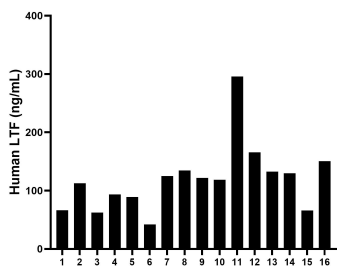
Sandwich ELISA standard curve of MP00429-1, Human Lactotransferrin/LTF Recombinant Matched Antibody Pair - PBS only. 83409-4-PBS was coated to a plate as the capture antibody and incubated with serial dilutions of standard Eg0888. 83409-1-PBS was HRP conjugated as the detection antibody. Range: 15.6-1000 pg/mL



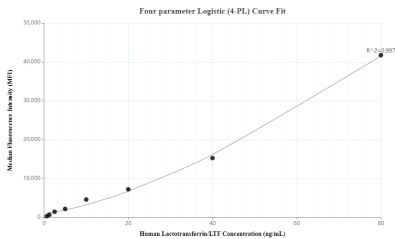
Urine of eight humans was measured. The Lactotransferrin/LTF concentration of these samples was determined to be 964.611 pg/mL, with a range of 201.321 - 1,510.588. pg/mL



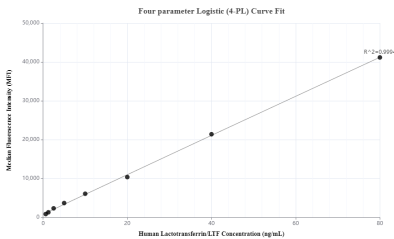
Saliva of eight humans was measured. The Lactotransferrin/LTF concentration of these samples was determined to be 604.833 ng/mL, with a range of 101.828 - 1,277.928 pg/mL



Serum of sixteen humans was measured. The Lactotransferrin/LTF concentration of these samples was determined to be 119.112 ng/mL, with a range of 42.104 - 295.911 pg/mL



Cytometric bead array standard curve of MP00429-1, Lactotransferrin/LTF Recombinant Matched Antibody Pair, PBS Only. Capture antibody: 83409-4-PBS. Detection antibody: 83409-1-PBS. Standard: Eg0888. Range: 0.625-80 ng/mL



Cytometric bead array standard curve of MP00429-2, Lactotransferrin/LTF Recombinant Matched Antibody Pair, PBS Only. Capture antibody: 83409-2-PBS. Detection antibody: 83409-1-PBS. Standard: Eg0888. Range: 0.625-80 ng/mL