

For Research Use Only

SREBF2 Recombinant antibody

Catalog Number: 83403-1-RR



Basic Information

Catalog Number:

83403-1-RR

Concentration:

1000 ug/ml

Source:

Rabbit

Isotype:

IgG

Immunogen Catalog Number:

AG28205

GenBank Accession Number:

BC056158

GeneID (NCBI):

6721

UNIPROT ID:

Q12772

Full Name:

sterol regulatory element binding
transcription factor 2

Calculated MW:

124 kDa

Purification Method:

Protein A purification

CloneNo.:

240451A12

Recommended Dilutions:

IF/ICC 1:200-1:800

Applications

Tested Applications:

IF/ICC, FC (Intra), ELISA

Species Specificity:

human

Positive Controls:

IF/ICC : HeLa cells,

Background Information

SREBF2, also named as BHLHD2, is a 1141 amino acid protein, which contains 1 bHLH domain and belongs to the SREBP family. SREBF2 localizes in the endoplasmic reticulum membrane and is ubiquitously expressed in adult and fetal tissues. SREBF2 as a transcriptional activator is required for lipid homeostasis.

Storage

Storage:

Store at -20°C. Stable for one year after shipment.

Storage Buffer:

PBS with 0.02% sodium azide and 50% glycerol pH 7.3.

Aliquoting is unnecessary for -20°C storage

For technical support and original validation data for this product please contact:

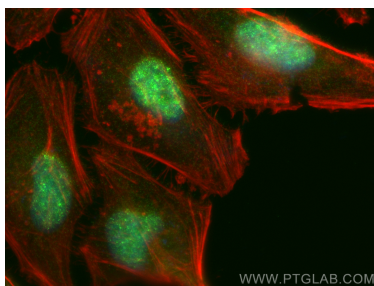
T: 4006900926

E: Proteintech-CN@ptglab.com

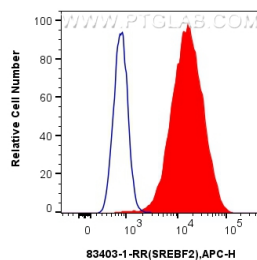
W: ptgcn.com

This product is exclusively available under Proteintech Group brand and is not available to purchase from any other manufacturer.

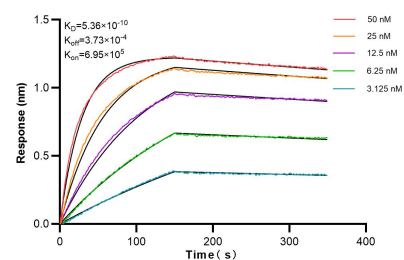
Selected Validation Data



Immunofluorescent analysis of (4% PFA) fixed HeLa cells using SREBF2 antibody (83403-1-RR, Clone: 240451A12) at dilution of 1:400 and CoraLite@488-Conjugated Goat Anti-Rabbit IgG(H+L) (SA00013-2), CL594-Phalloidin (red).



1×10^6 HeLa cells were intracellularly stained with 0.25 μ g SREBF2 Recombinant antibody (83403-1-RR, Clone:240451A12) and APC-Conjugated AffiniPure Goat Anti-Rabbit IgG(H+L)(red), or 0.25 μ g Isotype Control (blue). Cells were fixed with 4% PFA and permeabilized with Flow Cytometry Perm Buffer (PF00011-C).



Biolayer interferometry (BLI) kinetic assays of 83403-1-RR against Human SREBF2 were performed. The affinity constant is 0.536 nM.