

For Research Use Only

MOSPD2 Recombinant antibody, PBS Only (Capture/Detector)

Catalog Number: 83398-1-PBS

Featured Product



Basic Information

Catalog Number: 83398-1-PBS	GenBank Accession Number: BC030641	Purification Method: Protein A purification
Concentration: 1 mg/ml	GeneID (NCBI): 158747	CloneNo.: 240282C11
Source: Rabbit	UNIPROT ID: Q8NHP6	
Isotype: IgG	Full Name: motile sperm domain containing 2	
Immunogen Catalog Number: AG22206	Calculated MW: 518 aa, 60 kDa	
	Observed MW: 59 kDa	

Applications

Tested Applications:
WB, IHC, FC (Intra), Cytometric bead array, Indirect ELISA

Species Specificity:
human, rat

Background Information

MOSPD2 is a 518-amino acid protein containing an N-terminal CRAL/TRIO domain, a major sperm protein (MSP) domain, and a potential C-terminal transmembrane domain. MOSPD2 is a member of the vesicle-associated membrane protein-associated protein (VAP) family and one of the endoplasmic reticulum (ER) receptors that function as tether proteins to bridge ER and other organelles to build contacts (PMID: 29858488, 35389430).

Storage

Storage:
Store at -80°C.
The product is shipped with ice packs. Upon receipt, store it immediately at -80°C

Storage Buffer:
PBS only, pH7.3

For technical support and original validation data for this product please contact:

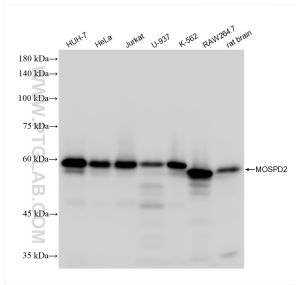
T: 4006900926

E: Proteintech-CN@ptglab.com

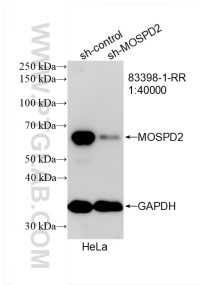
W: ptgcn.com

This product is exclusively available under Proteintech Group brand and is not available to purchase from any other manufacturer.

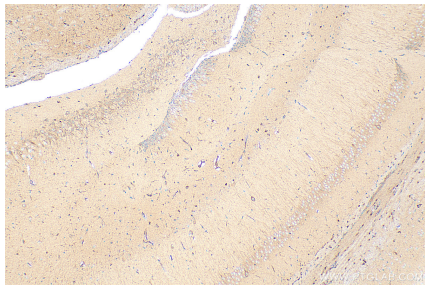
Selected Validation Data



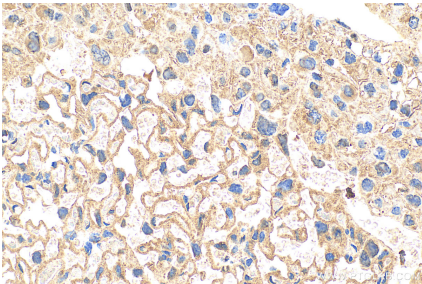
Various lysates were subjected to SDS PAGE followed by western blot with 83398-1-RR (MOSPD2 antibody) at dilution of 1:10000 incubated at room temperature for 1.5 hours. This data was developed using the same antibody clone with 83398-1-PBS in a different storage buffer formulation.



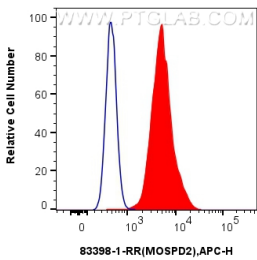
WB result of MOSPD2 antibody (83398-1-RR; 1:40000; incubated at room temperature for 1.5 hours) with sh-Control and sh-MOSPD2 transfected HeLa cells. This data was developed using the same antibody clone with 83398-1-PBS in a different storage buffer formulation.



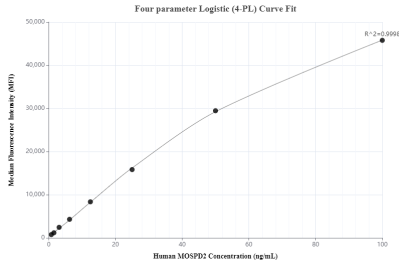
Immunohistochemical analysis of paraffin-embedded mouse brain tissue slide using 83398-1-RR (MOSPD2 antibody) at dilution of 1:400 (under 10x lens). Heat mediated antigen retrieval with Tris-EDTA buffer (pH 9.0). This data was developed using the same antibody clone with 83398-1-PBS in a different storage buffer formulation.



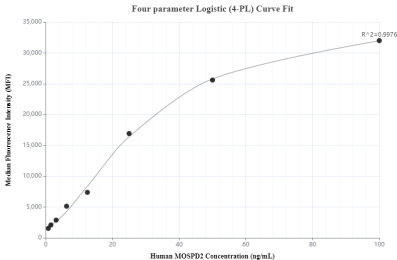
Immunohistochemical analysis of paraffin-embedded mouse placenta tissue slide using 83398-1-RR (MOSPD2 antibody) at dilution of 1:400 (under 40x lens). Heat mediated antigen retrieval with Tris-EDTA buffer (pH 9.0). This data was developed using the same antibody clone with 83398-1-PBS in a different storage buffer formulation.



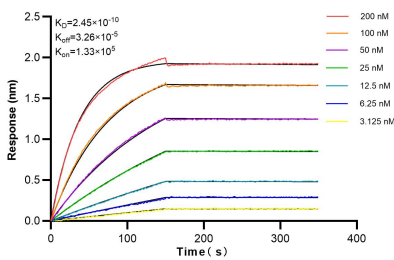
1x10⁶ A431 cells were intracellularly stained with 0.25 ug MOSPD2 Recombinant antibody (83398-1-RR, Clone:240282C11) and APC-Conjugated AffiniPure Goat Anti-Rabbit IgG(H+L) (red), or 0.25 ug Isotype Control (blue). Cells were fixed with 4% PFA and permeabilized with Flow Cytometry Perm Buffer (PF00011-C). This data was developed using the same antibody clone with 83398-1-PBS in a different storage buffer formulation.



Cytometric bead array standard curve of MP00419-2, MOSPD2 Recombinant Matched Antibody Pair, PBS Only. Capture antibody: 83398-1-PBS. Detection antibody: 83398-2-PBS. Standard: Ag22206. Range: 0.78-100 ng/mL



Cytometric bead array standard curve of MP00419-3, MOSPD2 Recombinant Matched Antibody Pair, PBS Only. Capture antibody: 83398-3-PBS. Detection antibody: 83398-1-PBS. Standard: Ag22206. Range: 0.78-100 ng/mL



Biolayer interferometry (BLI) kinetic assays of 83398-1-RR against Human MOSPD2 were performed. The affinity constant is 0.245 nM.