

For Research Use Only

BRCA1 Recombinant antibody, PBS Only



Catalog Number: 83390-6-PBS

Basic Information

Catalog Number:

83390-6-PBS

Size:

1 mg/ml

Source:

Rabbit

Isotype:

IgG

Immunogen Catalog Number:

AG17946

GenBank Accession Number:

BC115037

GeneID (NCBI):

672

UNIPROT ID:

P38398

Full Name:

breast cancer 1, early onset

Calculated MW:

1863 aa, 208 kDa

Purification Method:

Protein A purification

CloneNo.:

240285E10

Applications

Tested Applications:

ELISA, WB

Species Specificity:

human

Background Information

Storage

Storage:

Store at -80°C.

The product is shipped with ice packs. Upon receipt, store it immediately at -80°C

Storage Buffer:

PBS Only

For technical support and original validation data for this product please contact:

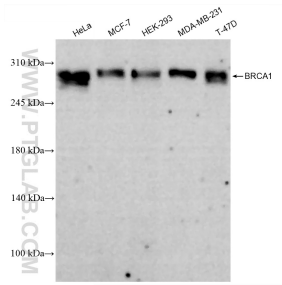
T: 4006900926

E: Proteintech-CN@ptglab.com

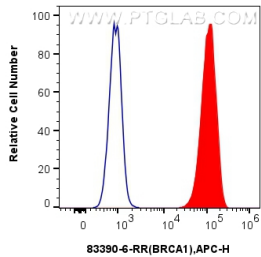
W: ptgcn.com

This product is exclusively available under Proteintech Group brand and is not available to purchase from any other manufacturer.

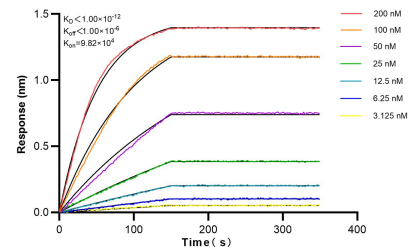
Selected Validation Data



Various lysates were subjected to SDS PAGE followed by western blot with 83390-6-RR (BRCA1 antibody) at dilution of 1:10000 incubated at room temperature for 1.5 hours. This data was developed using the same antibody clone with 83390-6-PBS in a different storage buffer formulation.



1x10⁶ MCF-7 cells were intracellularly stained with 0.25 ug BRCA1 Recombinant antibody (83390-6-RR, Clone:240285E10) and APC-Conjugated AffiniPure Goat Anti-Rabbit IgG(H+L)(red), or 0.25 ug Isotype Control (blue). Cells were fixed and permeabilized with Transcription Factor Staining Buffer Kit (PF00011). This data was developed using the same antibody clone with 83390-6-PBS in a different storage buffer formulation.



Biolayer interferometry (BLI) kinetic assays of 83390-6-RR against Human BRCA1 were performed. The affinity constant is below 1 pM.