

For Research Use Only

BRCA1 Recombinant antibody, PBS Only (Capture/Detector)

Catalog Number: 83390-2-PBS



Basic Information

Catalog Number:

83390-2-PBS

Size:

1 mg/ml

Source:

Rabbit

Isotype:

IgG

Immunogen Catalog Number:

AG17946

GenBank Accession Number:

BC115037

GeneID (NCBI):

672

UNIPROT ID:

P38398

Full Name:

breast cancer 1, early onset

Calculated MW:

1863 aa, 208 kDa

Purification Method:

Protein A purification

CloneNo.:

240285H6

Applications

Tested Applications:

Cytometric bead array, Sandwich ELISA, Indirect ELISA,
Sample test

Species Specificity:

human

Background Information

Storage

Storage:

Store at -80°C.

The product is shipped with ice packs. Upon receipt, store it immediately at -80°C

Storage Buffer:

PBS Only

For technical support and original validation data for this product please contact:

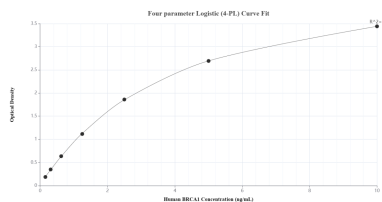
T: 4006900926

E: Proteintech-CN@ptglab.com

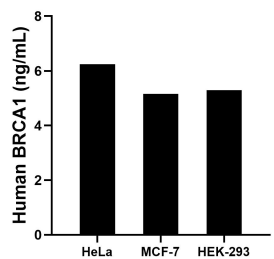
W: ptgcn.com

This product is exclusively available under Proteintech Group brand and is not available to purchase from any other manufacturer.

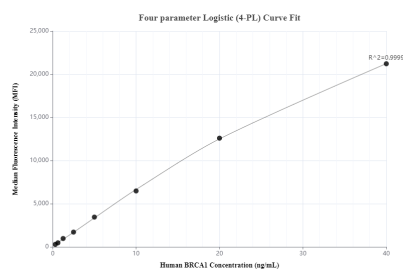
Selected Validation Data



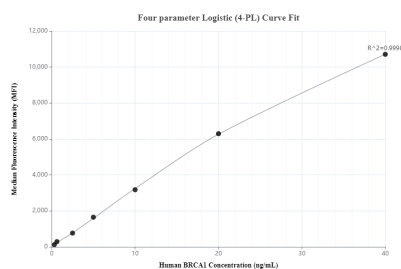
Sandwich ELISA standard curve of MP00425-2, Human BRCA1 Recombinant Matched Antibody Pair - PBS only. 83390-4-PBS was coated to a plate as the capture antibody and incubated with serial dilutions of standard Ag17946. 83390-2-PBS was HRP conjugated as the detection antibody. Range: 0.156-10 ng/mL.



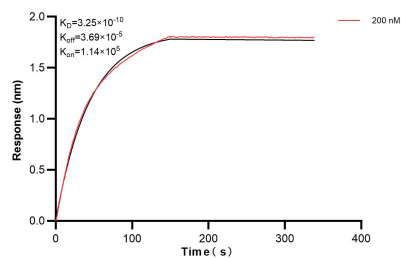
The mean BRCA1 concentration was determined to be 6.24 ng/mL in HeLa cell extract based on a 1.20 mg/mL extract load, 5.16 ng/mL in MCF-7 cell extract based on a 1.20 mg/mL extract load and 5.29 ng/mL in HEK-293 cell extract based on a 1.20 mg/mL extract load.



Cytometric bead array standard curve of MP00425-2, BRCA1 Recombinant Matched Antibody Pair, PBS Only. Capture antibody: 83390-4-PBS. Detection antibody: 83390-2-PBS. Standard: Ag17946. Range: 0.313-40 ng/mL.



Cytometric bead array standard curve of MP00425-3, BRCA1 Recombinant Matched Antibody Pair, PBS Only. Capture antibody: 83390-2-PBS. Detection antibody: 83390-1-PBS. Standard: Ag17946. Range: 0.313-40 ng/mL.



Biolayer interferometry (BLI) kinetic assay of 83390-2-PBS against Human BRCA1 was performed. The affinity constant is 0.325 nM.