

For Research Use Only

# CD28 Recombinant antibody, PBS Only (Detector)

Catalog Number: 83383-2-PBS



## Basic Information

Catalog Number:

83383-2-PBS

Size:

1 mg/ml

Source:

Rabbit

Isotype:

IgG

GenBank Accession Number:

BC093698

GeneID (NCBI):

940

ENSEMBL Gene ID:

ENSG00000178562

UNIPROT ID:

P10747

Full Name:

CD28 molecule

Calculated MW:

220 aa, 25 kDa

Purification Method:

Protein A purification

CloneNo.:

240353H7

## Applications

Tested Applications:

Cytometric bead array, Sandwich ELISA, Indirect ELISA, Sample test

Species Specificity:

human

## Background Information

### Storage

Storage:

Store at -80°C.

The product is shipped with ice packs. Upon receipt, store it immediately at -80°C

Storage Buffer:

PBS Only

For technical support and original validation data for this product please contact:

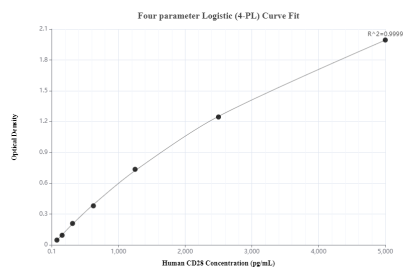
T: 4006900926

E: [Proteintech-CN@ptglab.com](mailto:Proteintech-CN@ptglab.com)

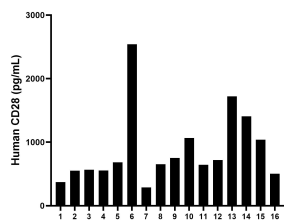
W: [ptgcn.com](http://ptgcn.com)

This product is exclusively available under Proteintech Group brand and is not available to purchase from any other manufacturer.

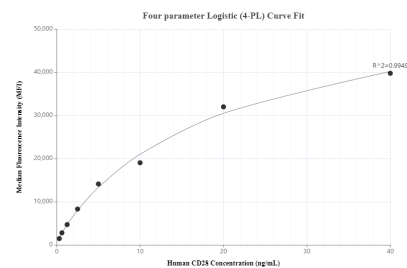
## Selected Validation Data



Sandwich ELISA standard curve of MP00136-5, Human CD28 Monoclonal Matched Antibody Pair - PBS only. 83383-8-PBS was coated to a plate as the capture antibody and incubated with serial dilutions of standard Eg0889. 83383-2-PBS was HRP conjugated as the detection antibody. Range: 78.125-5000 pg/mL



Serum of sixteen individual healthy human donors were measured. The human CD28 concentration of detected samples was determined to be 879.1 pg/mL with a range of 287.8 - 2,540.7 pg/mL



Cytometric bead array standard curve of MP00136-4, CD28 Recombinant Matched Antibody Pair, PBS Only. Capture antibody: 83383-3-PBS. Detection antibody: 83383-2-PBS. Standard: Eg0889. Range: 0.313-40 ng/mL