

For Research Use Only

RPL29 Recombinant monoclonal antibody, PBS Only

Catalog Number: 83377-1-PBS



Basic Information

Catalog Number:

83377-1-PBS

Source:

Rabbit

Isotype:

IgG

Immunogen Catalog Number:

AG34100

GenBank Accession Number:

BC008926

GeneID (NCBI):

6159

UNIPROT ID:

P47914

Full Name:

ribosomal protein L29

Calculated MW:

159 aa, 18 kDa

Purification Method:

Protein A purification

CloneNo.:

240062F9

Applications

Tested Applications:

WB, IF/ICC, FC (Intra), Indirect ELISA

Species Specificity:

human, mouse, rat

Background Information

Storage

Storage:

Store at -80°C.

The product is shipped with ice packs. Upon receipt, store it immediately at -80°C

Storage Buffer:

PBS only, pH7.3

For technical support and original validation data for this product please contact:

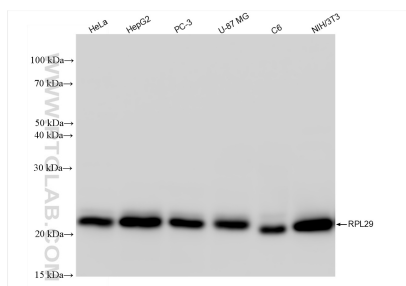
T: 4006900926

E: Proteintech-CN@ptglab.com

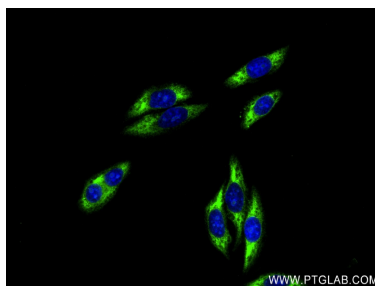
W: ptgcn.com

This product is exclusively available under Proteintech Group brand and is not available to purchase from any other manufacturer.

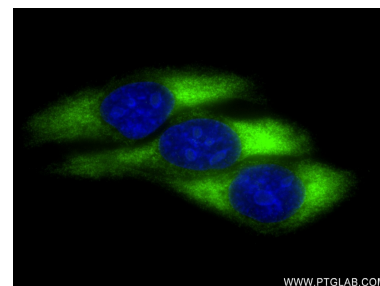
Selected Validation Data



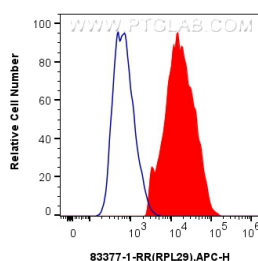
Various lysates were subjected to SDS PAGE followed by western blot with 83377-1-RR (RPL29 antibody) at dilution of 1:10000 incubated at room temperature for 1.5 hours. This data was developed using the same antibody clone with 83377-1-PBS in a different storage buffer formulation.



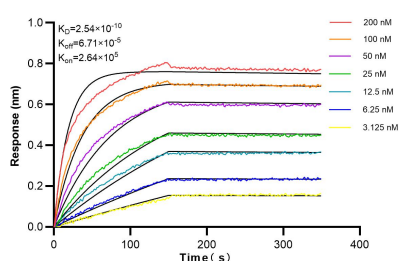
Immunofluorescent analysis of (-20°C Ethanol) fixed HepG2 cells using RPL29 antibody (83377-1-RR, Clone: 240062F9) at dilution of 1:400 and CoraLite®488-Conjugated AffiniPure Goat Anti-Rabbit IgG(H+L) (SA00013-2). This data was developed using the same antibody clone with 83377-1-PBS in a different storage buffer formulation.



Immunofluorescent analysis of (-20°C Ethanol) fixed HepG2 cells using RPL29 antibody (83377-1-RR, Clone: 240062F9) at dilution of 1:400 and CoraLite®488-Conjugated AffiniPure Goat Anti-Rabbit IgG(H+L) (SA00013-2). This data was developed using the same antibody clone with 83377-1-PBS in a different storage buffer formulation.



1x10⁶ HeLa cells were intracellularly stained with 0.25 ug RPL29 Recombinant antibody (83377-1-RR, Clone:240062F9) and APC-Conjugated AffiniPure Goat Anti-Rabbit IgG(H+L)(red), or 0.25 ug Isotype Control (blue). Cells were fixed with 4% PFA and permeabilized with Flow Cytometry Perm Buffer. This data was developed using the same antibody clone with 83377-1-PBS in a different storage buffer formulation.



Biolayer interferometry (BLI) kinetic assays of 83377-1-RR against Human RPL29 were performed. The affinity constant is 0.254 nM.