

For Research Use Only

# Rat MCP-1/CCL2 Recombinant antibody, PBS Only (Detector)

Catalog Number: 83370-2-PBS



## Basic Information

Catalog Number:

83370-2-PBS

Size:

1 mg/ml

Source:

Rabbit

Isotype:

IgG

GenBank Accession Number:

NM\_031530

GeneID (NCBI):

24770

UNIPROT ID:

P14844

Full Name:

chemokine (C-C motif) ligand 2

Calculated MW:

16 kDa

Observed MW:

20 kDa

Purification Method:

Protein A purification

CloneNo.:

240341G3

## Applications

Tested Applications:

WB, Cytometric bead array, Sandwich ELISA, Indirect ELISA, Sample test

Species Specificity:

rat

## Background Information

Monocyte chemoattractant protein-1 (MCP-1/CCL2) is one of the key chemokines that regulate migration and infiltration of monocytes/macrophages. Both CCL2 and its receptor CCR2 have been demonstrated to be induced and involved in various diseases. Migration of monocytes from the blood stream across the vascular endothelium is required for routine immunological surveillance of tissues, as well as in response to inflammation.

## Storage

Storage:

Store at -80°C.

**The product is shipped with ice packs. Upon receipt, store it immediately at -80°C**

Storage Buffer:

PBS Only

For technical support and original validation data for this product please contact:

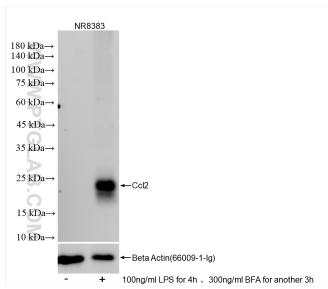
T: 4006900926

E: Proteintech-CN@ptglab.com

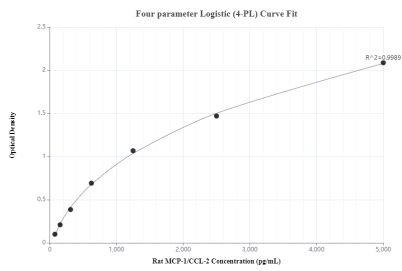
W: ptgcn.com

**This product is exclusively available under Proteintech Group brand and is not available to purchase from any other manufacturer.**

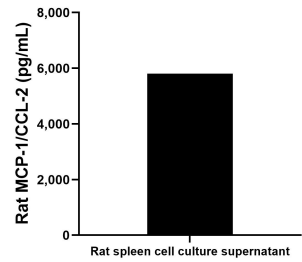
Selected Validation Data



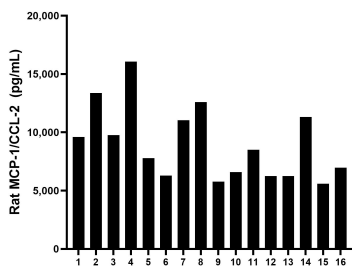
Untreated, LPS and Brefeldin A treated NR8383 cells were subjected to SDS PAGE followed by western blot with 83370-2-RR (Ccl2 antibody) at dilution of 1:10000 incubated at room temperature for 1.5 hours. This data was developed using the same antibody clone with 83370-2-PBS in a different storage buffer formulation.



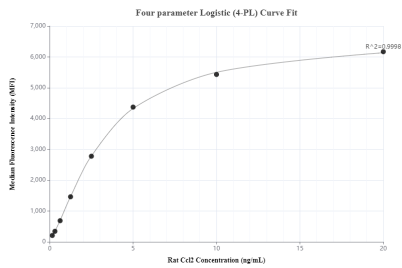
Sandwich ELISA standard curve of MP00390-3, rat MCP-1/CCL-2 Recombinant Matched Antibody Pair - PBS only. 83370-4-PBS was coated to a plate as the capture antibody and incubated with serial dilutions of standard: Eg0397. 83370-2-PBS was HRP conjugated as the detection antibody. Range: 78.1-5000 pg/mL.



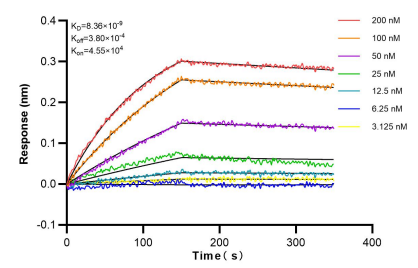
Rat spleen cell cultures (1/2 spleen; 1-2 mm pieces in 50 mL DMEM supplemented with 10% fetal bovine serum, containing 100 ng/mL LPS) were collected after culturing for 3 days in a CO2-enriched (9.5%) incubator. The cell culture supernatant was assayed for rat MCP-1/CCL2 and measured 5,804.62 pg/mL.



Serum of sixteen rat donors was measured. The MCP-1/CCL-2 concentration of detected samples was determined to be 8,981.3 pg/mL with a range of 5,770.2 - 16,068.9 pg/mL



Cytometric bead array standard curve of MP00390-2, RAT MCP-1/CCL-2 Recombinant Matched Antibody Pair, PBS Only. Capture antibody: 83370-3-PBS. Detection antibody: 83370-2-PBS. Standard: Eg0397. Range: 0.156-20 ng/mL



Bilayer interferometry (BLI) kinetic assays of 83370-2-RR against Rat MCP-1 were performed. The affinity constant is 0.836 nM.