

For Research Use Only

# Mouse Afp Recombinant antibody, PBS Only (Detector)

Catalog Number: 83367-2-PBS



## Basic Information

Catalog Number:

83367-2-PBS

Concentration:

1 mg/ml

Source:

Rabbit

Isotype:

IgG

GenBank Accession Number:

NM\_007423.4

GeneID (NCBI):

11576

UNIPROT ID:

P02772

Full Name:

alpha fetoprotein

Calculated MW:

67KD

Observed MW:

67-72 kDa

Purification Method:

Protein A purification

CloneNo.:

240232C7

## Applications

Tested Applications:

WB, Cytometric bead array, Sandwich ELISA, Indirect ELISA, Sample test

Species Specificity:

mouse

## Background Information

Alpha-fetoprotein (AFP) is one of the earliest proteins to be synthesised by the embryonic liver. The synthesis of AFP decreases dramatically after birth and only trace amounts are expressed in the adult liver. High serum AFP concentrations are also found in connection with primary liver cancer and teratocarcinoma.

## Storage

Storage:

Store at -80°C.

The product is shipped with ice packs. Upon receipt, store it immediately at -80°C

Storage Buffer:

PBS Only

For technical support and original validation data for this product please contact:

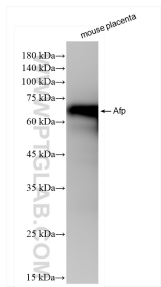
T: 4006900926

E: [Proteintech-CN@ptglab.com](mailto:Proteintech-CN@ptglab.com)

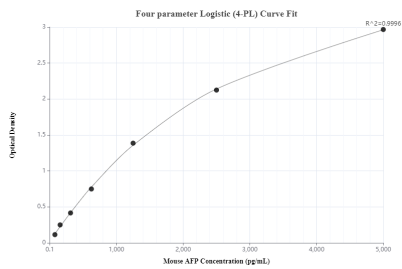
W: [ptgcn.com](http://ptgcn.com)

This product is exclusively available under Proteintech Group brand and is not available to purchase from any other manufacturer.

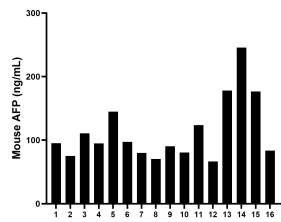
Selected Validation Data



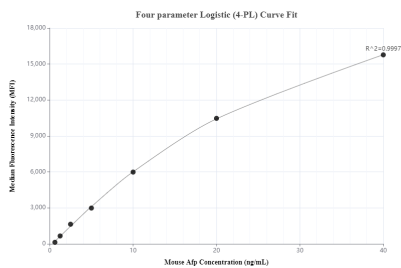
mouse placenta tissue were subjected to SDS PAGE followed by western blot with 83367-2-RR (Afp antibody) at dilution of 1:5000 incubated at room temperature for 1.5 hours. This data was developed using the same antibody clone with 83367-2-PBS in a different storage buffer formulation.



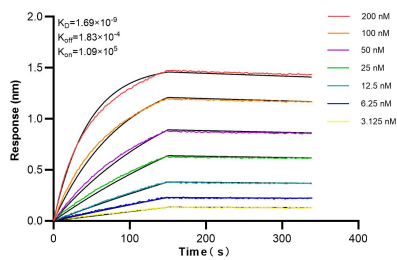
Sandwich ELISA standard curve of MP00395-4, Mouse AFP Monoclonal Matched Antibody Pair - PBS only. 83367-5-PBS was coated to a plate as the capture antibody and incubated with serial dilutions of standard Eg0670. 83367-2-PBS was HRP conjugated as the detection antibody. Range: 78.125-5000 pg/mL.



Serum of sixteen individual healthy mice were measured. The mouse AFP concentration of detected samples was determined to be 113.4 ng/mL with a range of 66.5-245.7 ng/mL.



Cytometric bead array standard curve of MP00395-2, MOUSE AFP Recombinant Matched Antibody Pair, PBS Only. Capture antibody: 83367-4-PBS. Detection antibody: 83367-2-PBS. Standard: Eg0670. Range: 0.625-40 ng/mL.



Biolayer interferometry (BLI) kinetic assays of 83367-2-RR against Mouse Afp were performed. The affinity constant is 1.69 nM.