

For Research Use Only

Mouse VEGFR2/KDR Recombinant antibody, PBS Only (Capture)

Catalog Number: 83366-1-PBS



Basic Information

Catalog Number:	83366-1-PBS	GenBank Accession Number:	NM_010612.2	Purification Method:	Protein A purification
Size:	1 mg/ml	GeneID (NCBI):	16542	CloneNo.:	240214D7
Source:	Rabbit	UNIPROT ID:	P35918-1		
Isotype:	IgG	Full Name:	kinase insert domain protein receptor		
		Calculated MW:	150KD		
		Observed MW:	150-190 kDa		

Applications

Tested Applications:
WB, Cytometric bead array, Indirect ELISA

Species Specificity:
mouse

Background Information

VEGFR2, also named CD309, KDR, and FLK1, is a receptor for VEGF or VEGFC. VEGFR2 which belongs to the protein kinase superfamily, has a tyrosine-protein kinase activity. The VEGF-kinase ligand/receptor signaling system plays a key role in vascular development and regulation of vascular permeability. In the case of HIV-1 infection, the interaction with extracellular viral Tat protein seems to enhance angiogenesis in Kaposi's sarcoma lesions. VEGFR2 functions as the main mediator of VEGF-induced endothelial proliferation, survival, migration, tubular morphogenesis, and sprouting.

Storage

Storage:
Store at -80°C.
The product is shipped with ice packs. Upon receipt, store it immediately at -80°C
Storage Buffer:
PBS Only

For technical support and original validation data for this product please contact:

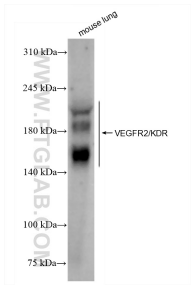
T: 4006900926

E: Proteintech-CN@ptglab.com

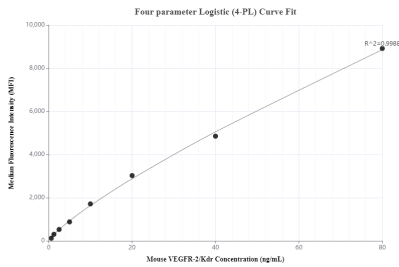
W: ptgcn.com

This product is exclusively available under Proteintech Group brand and is not available to purchase from any other manufacturer.

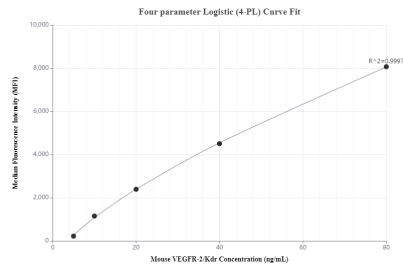
Selected Validation Data



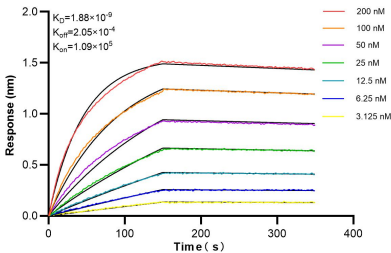
mouse lung tissue were subjected to SDS PAGE followed by western blot with 83366-1-RR (VEGFR2/KDR antibody) at dilution of 1:10000 incubated at room temperature for 1.5 hours. This data was developed using the same antibody clone with 83366-1-PBS in a different storage buffer formulation.



Cytometric bead array standard curve of MP00394-1, MOUSE VEGFR2/KDR Recombinant Matched Antibody Pair, PBS Only. Capture antibody: 83366-1-PBS. Detection antibody: 83366-3-PBS. Standard: Eg0703. Range: 0.625-80 ng/mL.



Cytometric bead array standard curve of MP00394-3, MOUSE VEGFR2/KDR Recombinant Matched Antibody Pair, PBS Only. Capture antibody: 83366-1-PBS. Detection antibody: 83366-2-PBS. Standard: Eg0703. Range: 5-80 ng/mL.



Bi-layer interferometry (BLI) kinetic assays of 83366-1-RR against Mouse VEGFR2/KDR were performed. The affinity constant is 1.88 nM.