

For Research Use Only

NCAM1/CD56 Recombinant antibody, PBS Only (Capture/Detector)

Catalog Number: 83365-4-PBS



Basic Information

Catalog Number:

83365-4-PBS

Size:

1 mg/ml

Source:

Rabbit

Isotype:

IgG

GenBank Accession Number:

BC047244

GeneID (NCBI):

4684

ENSEMBL Gene ID:

ENSG00000149294

UNIPROT ID:

P13591

Full Name:

neural cell adhesion molecule 1

Calculated MW:

95 kDa

Purification Method:

Protein A purification

CloneNo.:

240078H1

Applications

Tested Applications:

Cytometric bead array, Sandwich ELISA, Indirect ELISA,
Sample test

Species Specificity:

human

Background Information

Neural cell adhesion molecule 1 (NCAM1, also known as CD56) is a cell adhesion glycoprotein of the immunoglobulin (Ig) superfamily. It is a multifunction protein involved in synaptic plasticity, neurodevelopment, and neurogenesis. NCAM1 is expressed on human neurons, glial cells, skeletal muscle cells, NK cells and a subset of T cells, and the expression is observed in a wide variety of human tumors, including myeloma, myeloid leukemia, neuroendocrine tumors, Wilms' tumor, neuroblastoma, and NK/T cell lymphomas. Three major isoforms of NCAM1, with molecular masses of 120, 140, and 180 kDa, are generated by alternative splicing of mRNA (PMID: 9696812). The glycosylphosphatidylinositol (GPI)-anchored NCAM120 and the transmembrane NCAM140 and NCAM180 consist of five Ig-like domains and two fibronectin-type III repeats (FNIII). All three forms can be posttranslationally modified by addition of polysialic acid (PSA) (PMID: 14976519). Several other isoforms have also been described (PMID: 1856291).

Storage

Storage:

Store at -80°C.

The product is shipped with ice packs. Upon receipt, store it immediately at -80°C

Storage Buffer:

PBS Only

For technical support and original validation data for this product please contact:

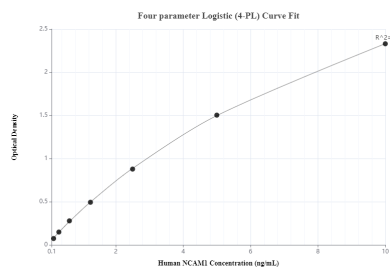
T: 4006900926

E: Proteintech-CN@ptglab.com

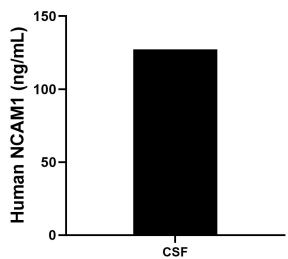
W: ptgcn.com

This product is exclusively available under Proteintech Group brand and is not available to purchase from any other manufacturer.

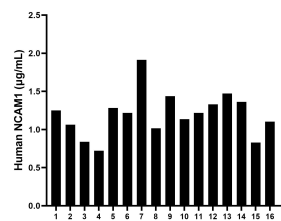
Selected Validation Data



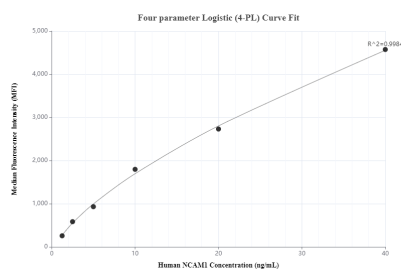
Sandwich ELISA standard curve of MP00393-4, Human NCAM1/CD56 Monoclonal Matched Antibody Pair - PBS only. 83365-5-PBS was coated to a plate as the capture antibody and incubated with serial dilutions of standard Eg31816. 83365-4-PBS was HRP conjugated as the detection antibody. Range: 0.156-10 ng/mL



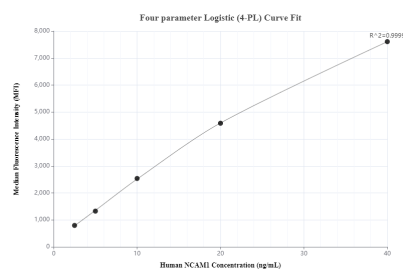
The NCAM1/CD56 concentration of Human cerebrospinal fluid (CSF) samples were determined to be 127.3 ng/mL



Serum of sixteen individual healthy human donors were measured. The NCAM1/CD56 concentration of detected samples was determined to be 1.2 ug/mL with a range of 0.7 - 1.9 ug/mL



Cytometric bead array standard curve of MP00393-1, NCAM1/CD56 Recombinant Matched Antibody Pair, PBS Only. Capture antibody: 83365-4-PBS. Detection antibody: 83365-3-PBS. Standard: Eg31816 Range: 1.25-40ng/mL



Cytometric bead array standard curve of MP00393-2, NCAM1/CD56 Recombinant Matched Antibody Pair, PBS Only. Capture antibody: 83365-4-PBS. Detection antibody: 83365-1-PBS. Standard: Eg31816. Range: 2.5-40ng/mL