

For Research Use Only

PCARE Recombinant antibody, PBS Only

Catalog Number: 83364-4-PBS



Basic Information

Catalog Number:

83364-4-PBS

Concentration:

1 mg/ml

Source:

Rabbit

Isotype:

IgG

Immunogen Catalog Number:

AG34774

GenBank Accession Number:

NM_001029883

GeneID (NCBI):

388939

UNIPROT ID:

A6NGG8

Full Name:

chromosome 2 open reading frame 71

Calculated MW:

140 kDa

Observed MW:

140 kDa

Purification Method:

Protein A purification

CloneNo.:

240352F6

Applications

Tested Applications:

WB, IHC, IF-P, ELISA

Species Specificity:

human, mouse

Background Information

C2orf71/PCARE (photoreceptor cilium actin regulator) is a retina-specific protein consisting of 1289 amino acids with a predicted molecular weight of 140 kDa. PCARE is predicted to be myristoylated and palmitoylated at its N terminus and plays an important role in delivering actin-associated components to the base of the photoreceptor OSs to regulate the initial development of OS disks (PMID: 32312818, 35253837).

Storage

Storage:

Store at -80°C.

The product is shipped with ice packs. Upon receipt, store it immediately at -80°C

Storage Buffer:

PBS Only

For technical support and original validation data for this product please contact:

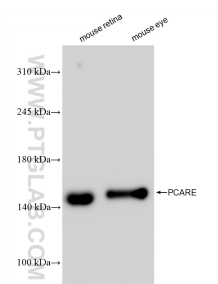
T: 4006900926

E: Proteintech-CN@ptglab.com

W: ptgcn.com

This product is exclusively available under Proteintech Group brand and is not available to purchase from any other manufacturer.

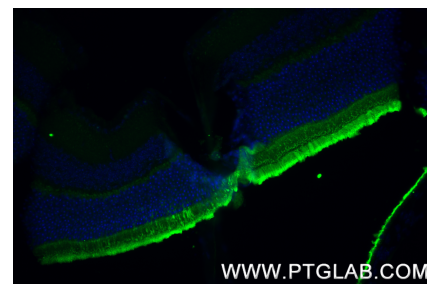
Selected Validation Data



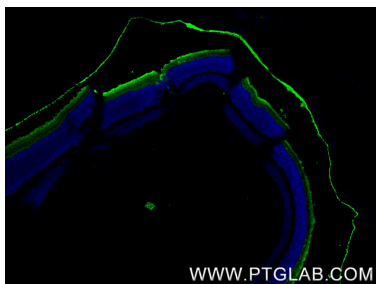
Various lysates were subjected to SDS PAGE followed by western blot with 83364-4-RR (PCARE antibody) at dilution of 1:10000 incubated at room temperature for 1.5 hours. This data was developed using the same antibody clone with 83364-4-PBS in a different storage buffer formulation.



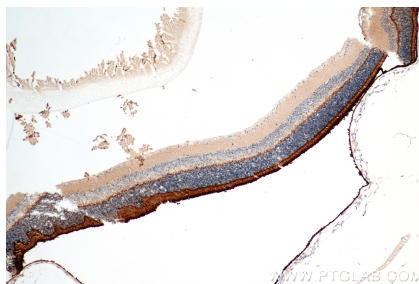
Immunohistochemical analysis of paraffin-embedded mouse eye tissue slide using 83364-4-RR (PCARE antibody) at dilution of 1:1000 (under 40x lens). Heat mediated antigen retrieval with Tris-EDTA buffer (pH 9.0). This data was developed using the same antibody clone with 83364-4-PBS in a different storage buffer formulation.



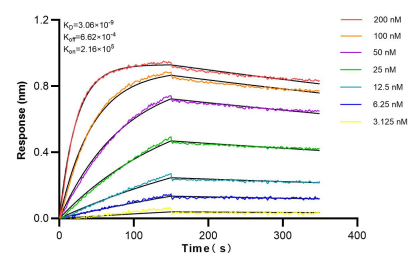
Immunofluorescent analysis of (4% PFA) fixed paraffin-embedded mouse eye tissue using PCARE antibody (83364-4-RR, Clone: 240352F6) at dilution of 1:1000 and CoraLite® 488-Conjugated Goat Anti-Rabbit IgG(H+L) (SA00013-2). Heat mediated antigen retrieval with Tris-EDTA buffer (pH 9.0). This data was developed using the same antibody clone with 83364-4-PBS in a different storage buffer formulation.



Immunofluorescent analysis of (4% PFA) fixed paraffin-embedded mouse eye tissue using PCARE antibody (83364-4-RR, Clone: 240352F6) at dilution of 1:1000 and CoraLite® 488-Conjugated Goat Anti-Rabbit IgG(H+L) (SA00013-2). Heat mediated antigen retrieval with Tris-EDTA buffer (pH 9.0). This data was developed using the same antibody clone with 83364-4-PBS in a different storage buffer formulation.



Immunohistochemical analysis of paraffin-embedded mouse eye tissue slide using 83364-4-RR (PCARE antibody) at dilution of 1:1000 (under 10x lens). Heat mediated antigen retrieval with Tris-EDTA buffer (pH 9.0). This data was developed using the same antibody clone with 83364-4-PBS in a different storage buffer formulation.



Bi-layer interferometry (BLI) kinetic assays of 83364-4-RR against Human PCARE were performed. The affinity constant is 3.06 nM.