

For Research Use Only

RBM20 Recombinant antibody

Catalog Number: 83363-1-RR



Basic Information

Catalog Number:

83363-1-RR

Concentration:

1000 ug/ml

Source:

Rabbit

Isotype:

IgG

Immunogen Catalog Number:

AG34322

GenBank Accession Number:

NM_001134363

GeneID (NCBI):

282996

UNIPROT ID:

Q5T481

Full Name:

RNA binding motif protein 20

Calculated MW:

134 kDa

Observed MW:

190 kDa

Purification Method:

Protein A purification

CloneNo.:

240345B7

Recommended Dilutions:

WB: 1:5000-1:50000

FC (Intra): 0.20 ug per 10⁶ cells in a 100 µl suspension

Applications

Tested Applications:

WB, FC (Intra), ELISA

Species Specificity:

human

Positive Controls:

WB : HEK-293T cells, K-562 cells, TT cells, A549 cells

FC (Intra) : K-562 cells,

Background Information

RBM20 (RNA binding motif protein 20) is a heart- and skeletal muscle- enriched splicing factor that controls tissue-specific isoform expression of many other genes besides TTN, including sarcomeric genes such myomesin 1, but also Ca²⁺- and ion-handling genes such as CAMK2D (calcium/calmodulin-dependent kinase II-delta) and RYR2 (ryanodine receptor 2) (PMID: 29650543).

Storage

Storage:

Store at -20°C. Stable for one year after shipment.

Storage Buffer:

PBS with 0.02% sodium azide and 50% glycerol, pH7.3

Aliquoting is unnecessary for -20°C storage

For technical support and original validation data for this product please contact:

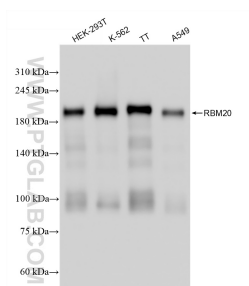
T: 4006900926

E: Proteintech-CN@ptglab.com

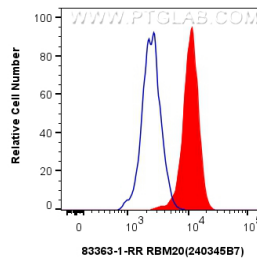
W: ptgcn.com

This product is exclusively available under Proteintech Group brand and is not available to purchase from any other manufacturer.

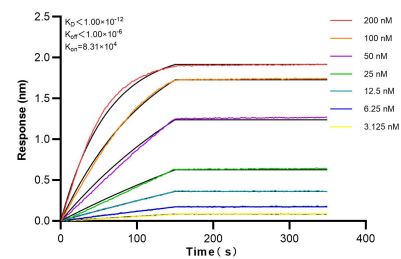
Selected Validation Data



Various lysates were subjected to SDS PAGE followed by western blot with 83363-1-RR (RBM20 antibody) at dilution of 1:10000 incubated at room temperature for 1.5 hours.



1×10^6 K-562 cells were intracellularly stained with 0.2 μ g RBM20 Recombinant antibody (83363-1-RR, Clone:240345B7) and CoraLite®488-Conjugated Goat Anti-Rabbit IgG(H+L) (SA00013-2) (red), or 0.2 μ g Rabbit IgG Isotype Control Recombinant Antibody (98136-1-RR, Clone: 240953C9) (blue). Cells were fixed and permeabilized with Transcription Factor Staining Buffer Kit (PF00011).



Biolayer interferometry (BLI) kinetic assays of 83363-1-RR against Human RBM20 were performed. The affinity constant is below 1 pM.