

For Research Use Only

# RBM20 Recombinant antibody, PBS Only (Capture/Detector)

Catalog Number: 83363-1-PBS



## Basic Information

Catalog Number:

83363-1-PBS

Size:

1 mg/ml

Source:

Rabbit

Isotype:

IgG

Immunogen Catalog Number:

AG34322

GenBank Accession Number:

NM\_001134363

GeneID (NCBI):

282996

UNIPROT ID:

Q5T481

Full Name:

RNA binding motif protein 20

Calculated MW:

134 kDa

Observed MW:

190 kDa

Purification Method:

Protein A purification

CloneNo.:

240345B7

## Applications

Tested Applications:

WB, FC (Intra), Cytometric bead array, Sandwich ELISA, Indirect ELISA, Sample test

Species Specificity:

human

## Background Information

RBM20 (RNA binding motif protein 20) is a heart- and skeletal muscle- enriched splicing factor that controls tissue-specific isoform expression of many other genes besides TTN, including sarcomeric genes such myomesin 1, but also Ca<sup>2+</sup>- and ion-handling genes such as CAMK2D (calcium/calmodulin-dependent kinase II-delta) and RYR2 (ryanodine receptor 2) (PMID: 29650543).

## Storage

Storage:

Store at -80°C.

**The product is shipped with ice packs. Upon receipt, store it immediately at -80°C**

Storage Buffer:

PBS Only

For technical support and original validation data for this product please contact:

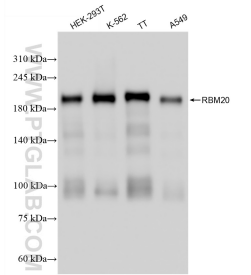
T: 4006900926

E: [Proteintech-CN@ptglab.com](mailto:Proteintech-CN@ptglab.com)

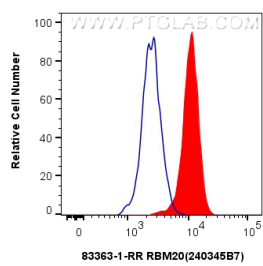
W: [ptgcn.com](http://ptgcn.com)

**This product is exclusively available under Proteintech Group brand and is not available to purchase from any other manufacturer.**

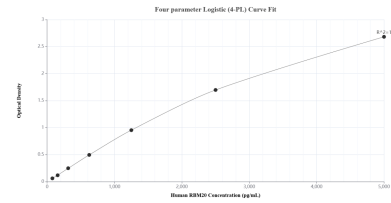
Selected Validation Data



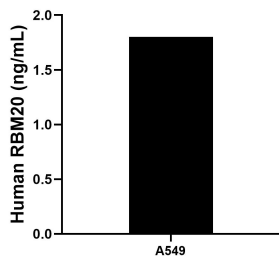
Various lysates were subjected to SDS PAGE followed by western blot with 83363-1-RR (RBM20 antibody) at dilution of 1:10000 incubated at room temperature for 1.5 hours. This data was developed using the same antibody clone with 83363-1-PBS in a different storage buffer formulation.



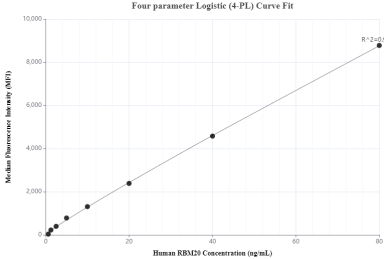
1x10<sup>6</sup> K-562 cells were intracellularly stained with 0.2 ug RBM20 Recombinant antibody (83363-1-RR, Clone:240345B7) and CoraLite®488-Conjugated Goat Anti-Rabbit IgG(H+L) (SA00013-2)(red), or 0.2 ug Rabbit IgG Isotype Control Recombinant Antibody (98136-1-RR, Clone: 240953C9) (blue). Cells were fixed and permeabilized with Transcription Factor Staining Buffer Kit (PF00011). This data was developed using the same antibody clone with 83363-1-PBS in a



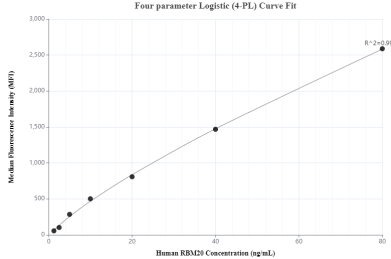
Sandwich ELISA standard curve of MP00379-4, Human RBM20 Recombinant Matched Antibody Pair - PBS only. 83363-2-PBS was coated to a plate as the capture antibody and incubated with serial dilutions of standard Ag34322. 83363-1-PBS was HRP conjugated as the detection antibody. Range: 78.1-5000 pg/mL.



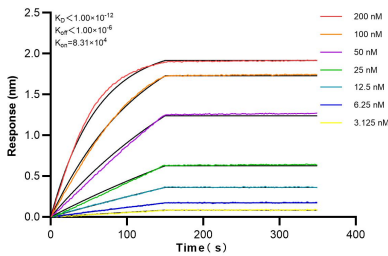
The mean RBM20 concentration was determined to be 1.8 ng/mL in A549 cell extract based on a 2.0 mg/mL extract load.



Cytometric bead array standard curve of MP00379-1, RBM20 Recombinant Matched Antibody Pair, PBS Only. Capture antibody: 83363-1-PBS. Detection antibody: 83363-2-PBS. Standard: Ag34322. Range: 0.625-80 ng/mL.



Cytometric bead array standard curve of MP00379-2, RBM20 Recombinant Matched Antibody Pair, PBS Only. Capture antibody: 83363-3-PBS. Detection antibody: 83363-1-PBS. Standard: Ag34322. Range: 1.25-80 ng/mL.



Biolayer interferometry (BLI) kinetic assays of 83363-1-RR against Human RBM20 were performed. The affinity constant is below 1 pM.