

For Research Use Only

NEDD9 Recombinant antibody, PBS Only (Capture)

Catalog Number: 83362-2-PBS

Featured Product



Basic Information

Catalog Number:

83362-2-PBS

Concentration:

1 mg/ml

Source:

Rabbit

Isotype:

IgG

Immunogen Catalog Number:

AG34170

GenBank Accession Number:

BC040207

GeneID (NCBI):

4739

UNIPROT ID:

Q14511

Full Name:

neural precursor cell expressed,
developmentally down-regulated 9

Calculated MW:

834 aa, 93 kDa

Observed MW:

105 kDa, 115 kDa

Purification Method:

Protein A purification

CloneNo.:

240310F8

Applications

Tested Applications:

WB, IF/ICC, Cytometric bead array, Indirect ELISA

Species Specificity:

human

Background Information

NEDD9, also known as CASL, HEF1, contains an N-terminal Src homology (SH) 3 domain and an adjacent domain composed of multiple SH2-binding motifs (PMID: 8668148). Cell cycle-regulated processing produces four isoforms: p115, p105, p65, and p55. Isoform p115 arises from p105 phosphorylation and appears later in the cell cycle. Isoform p55 arises from p105 as a result of cleavage at a caspase cleavage-related site and it appears specifically at mitosis. p105 and p115 are predominantly cytoplasmic and associated with focal adhesions, whereas p55 associates with the mitotic spindle (PMID: 9584194).

Storage

Storage:

Store at -80°C.

The product is shipped with ice packs. Upon receipt, store it immediately at -80°C

Storage Buffer:

PBS Only

For technical support and original validation data for this product please contact:

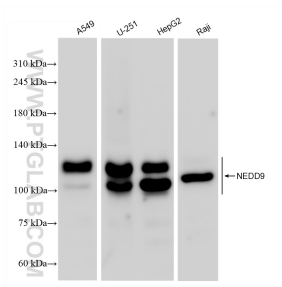
T: 4006900926

E: Proteintech-CN@ptglab.com

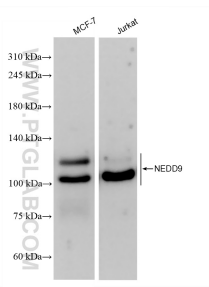
W: ptgcn.com

This product is exclusively available under Proteintech Group brand and is not available to purchase from any other manufacturer.

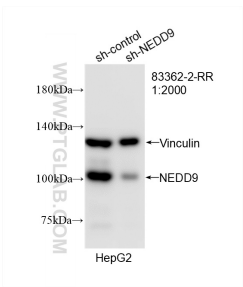
Selected Validation Data



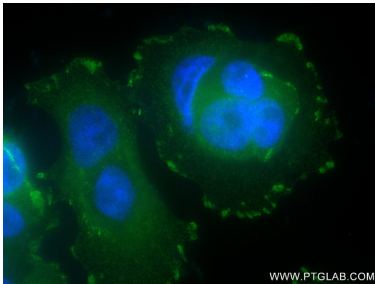
Various lysates were subjected to SDS PAGE followed by western blot with 83362-2-RR (NEDD9 antibody) at dilution of 1:8000 incubated at room temperature for 1.5 hours. This data was developed using the same antibody clone with 83362-2-PBS in a different storage buffer formulation.



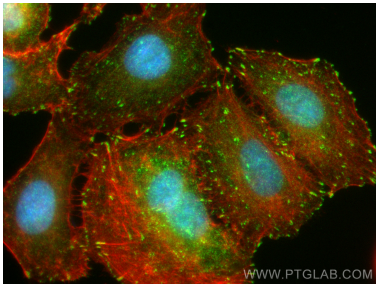
Various lysates were subjected to SDS PAGE followed by western blot with 83362-2-RR (NEDD9 antibody) at dilution of 1:8000 incubated at room temperature for 1.5 hours. This data was developed using the same antibody clone with 83362-2-PBS in a different storage buffer formulation.



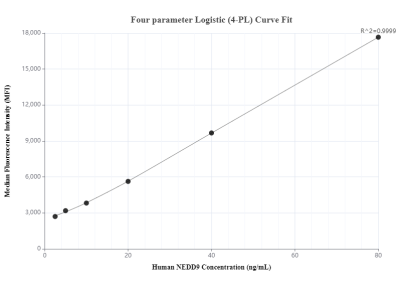
WB result of NEDD9 antibody (83362-2-RR; 1:2000; incubated at room temperature for 1.5 hours) with sh-Control and sh-NEDD9 transfected HepG2 cells. This data was developed using the same antibody clone with 83362-2-PBS in a different storage buffer formulation.



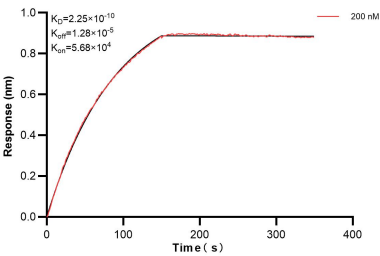
Immunofluorescent analysis of (4% PFA) fixed MCF-7 cells using NEDD9 antibody (83362-2-RR, Clone: 240310F8) at dilution of 1:200 and CoraLite®488-Conjugated AffiniPure Goat Anti-Rabbit IgG(H+L) (SA00013-2). This data was developed using the same antibody clone with 83362-2-PBS in a different storage buffer formulation.



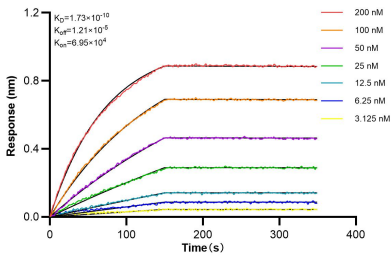
Immunofluorescent analysis of (4% PFA) fixed A549 cells using NEDD9 antibody (83362-2-RR, Clone: 240310F8) at dilution of 1:200 and Multi-rAb CoraLite® Plus 488-Conjugated AffiniPure Goat Anti-Rabbit Recombinant Secondary Antibody (H+L) (RGAR002), CL594-phalloidin (red). This data was developed using the same antibody clone with 83362-2-PBS in a different storage buffer formulation.



Cytometric bead array standard curve of MP00378-2, NEDD9 Recombinant Matched Antibody Pair, PBS Only. Capture antibody: 83362-2-PBS. Detection antibody: 83362-4-PBS. Standard: Ag34170. Range: 2.5-80 ng/mL



Biolayer interferometry (BLI) kinetic assay of 83362-2-PBS against Human NEDD9 was performed. The affinity constant is 0.225 nM.



Biolayer interferometry (BLI) kinetic assays of 83362-2 against Human NEDD9 were performed. The affinity constant is 0.173 nM.