

# SLC25A46 Recombinant antibody

Catalog Number: 83360-2-RR

## Basic Information

**Catalog Number:**

83360-2-RR

**Size:**

1000 µg/ml

**Source:**

Rabbit

**Isotype:**

IgG

**Immunogen Catalog Number:**

AG27293

**GenBank Accession Number:**

BC017169

**GeneID (NCBI):**

91137

**UNIPROT ID:**

Q96AG3

**Full Name:**

solute carrier family 25, member 46

**Calculated MW:**

418 aa, 46 kDa

**Observed MW:**

46 kDa

**Purification Method:**

Protein A purification

**CloneNo.:**

240114G3

**Recommended Dilutions:**

WB 1:5000-1:50000

## Applications

**Tested Applications:**

WB, FC (Intra), ELISA

**Species Specificity:**

human, mouse

**Positive Controls:**

**WB :** HEK-293 cells, HepG2 cells, MCF-7 cells, HeLa cells, Jurkat cells, MDA-MB-231 cells, mouse brain tissue

## Background Information

Solute carrier family 25 member 46 (SLC25A46), a highly conserved protein among various species including vertebrates, is a nuclear gene encoding mitochondrial carriers. SLC25A46 is involved in mitochondrial fission and the transport of lipids from the endoplasmic reticulum to mitochondria (PMID: 33277645). SLC25A46 has 3 isoforms with molecular weights of 30, 37 and 46 kDa, respectively.

## Storage

**Storage:**

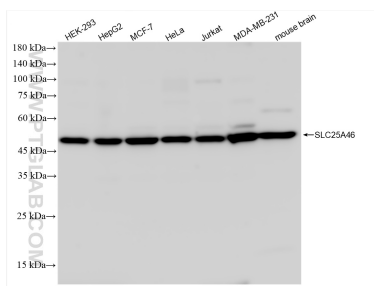
Store at -20°C. Stable for one year after shipment.

**Storage Buffer:**

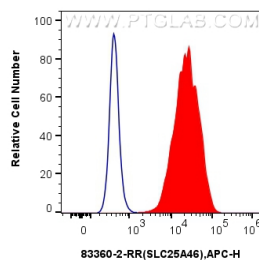
PBS with 0.02% sodium azide and 50% glycerol pH 7.3.

Aliquoting is unnecessary for -20°C storage

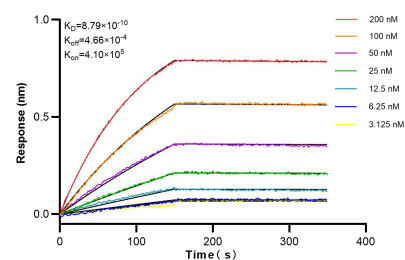
## Selected Validation Data



Various lysates were subjected to SDS PAGE followed by western blot with 83360-2-RR (SLC25A46 antibody) at dilution of 1:10000 incubated at room temperature for 1.5 hours.



$1 \times 10^6$  Caco-2 cells were intracellularly stained with 0.25  $\mu$ g SLC25A46 Recombinant antibody (83360-2-RR, Clone:240114G3) and APC-Conjugated AffiniPure Goat Anti-Rabbit IgG(H+L) (red), or 0.25  $\mu$ g Isotype Control (blue). Cells were fixed with 4% PFA and permeabilized with Flow Cytometry Perm Buffer (PF00011-C).



Biolayer interferometry (BLI) kinetic assays of 83360-2-RR against Human SLC25A46 were performed. The affinity constant is 0.879 nM.