

For Research Use Only

SLC25A46 Recombinant antibody, PBS Only (Capture)



Catalog Number: 83360-2-PBS

Basic Information

Catalog Number:

83360-2-PBS

Size:

1 mg/ml

Source:

Rabbit

Isotype:

IgG

Immunogen Catalog Number:

AG27293

GenBank Accession Number:

BC017169

GeneID (NCBI):

91137

UNIPROT ID:

Q96AG3

Full Name:

solute carrier family 25, member 46

Calculated MW:

418 aa, 46 kDa

Purification Method:

Protein A purification

CloneNo.:

240114G3

Applications

Tested Applications:

WB, Cytometric bead array, Indirect ELISA

Species Specificity:

human, mouse

Background Information

Storage

Storage:

Store at -80°C.

The product is shipped with ice packs. Upon receipt, store it immediately at -80°C

Storage Buffer:

PBS Only

For technical support and original validation data for this product please contact:

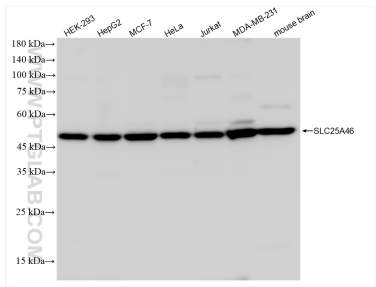
T: 4006900926

E: Proteintech-CN@ptglab.com

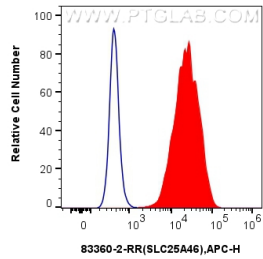
W: ptgcn.com

This product is exclusively available under Proteintech Group brand and is not available to purchase from any other manufacturer.

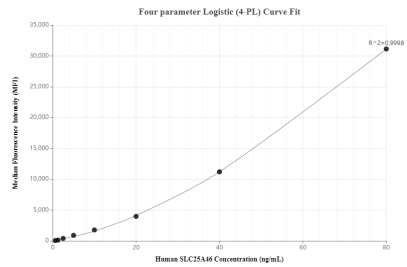
Selected Validation Data



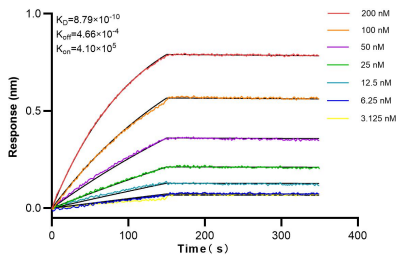
Various lysates were subjected to SDS PAGE followed by western blot with 83360-2-RR (SLC25A46 antibody) at dilution of 1:10000 incubated at room temperature for 1.5 hours. This data was developed using the same antibody clone with 83360-2-PBS in a different storage buffer formulation.



1x10⁶ Caco-2 cells were intracellularly stained with 0.25 ug SLC25A46 Recombinant antibody (83360-2-RR, Clone:240114G3) and APC-Conjugated AffiniPure Goat Anti-Rabbit IgG(H+L) (red), or 0.25 ug Isotype Control (blue). Cells were fixed with 4% PFA and permeabilized with Flow Cytometry Perm Buffer (PF00011-C). This data was developed using the same antibody clone with 83360-2-PBS in a different storage buffer formulation.



Cytometric bead array standard curve of MP00369-1, SLC25A46 Recombinant Matched Antibody Pair, PBS Only. Capture antibody: 83360-2-PBS. Detection antibody: 83360-3-PBS. Standard: Ag27293. Range: 0.625-80ng/mL.



Bi-layer interferometry (BLI) kinetic assays of 83360-2-RR against Human SLC25A46 were performed. The affinity constant is 0.879 nM.